

Anti-SLC16A14 antibody (100-180 Internal) (STJ94049)

STJ94049

GENERAL INFORMATION

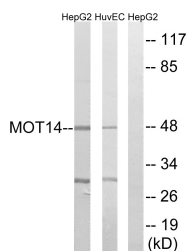
Product Type	Primary antibodies
Short Description	Rabbit polyclonal antibody anti-Monocarboxylate Transporter 14 (100-180 Internal) is suitable for use in Western Blot and ELISA research applications.
Applications	WB, ELISA
Host/Source	Rabbit
Reactivity	Human, Mouse

PRODUCT PROPERTIES

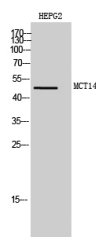
Clonality	Polyclonal
Clone ID	
Concentration	1 mg/mL
Conjugation	Unconjugated
Purification	The antibody was affinity-purified from rabbit anti-serum by affinity-chromatography.
Dilution Range	WB 1:500-1:2000 ELISA 1:10000
Formulation	PBS, 50% Glycerol, 0.5% BSA and 0.02% Sodium Azide.
Isotype	IgG
Storage	Store at -20°C for up to 1 year from the date of receipt, and avoid repeat freeze-thaw cycles.
Instruction	

TARGET INFORMATION

Gene ID	151473
Gene Symbol	SLC16A14
Uniprot ID	MOT14_HUMAN
Immunogen	The antiserum was produced against synthesized peptide derived from human MOT14 at amino acid range 131-180
Immunogen Region	100-180 Internal
Specificity	SLC16A14 polyclonal antibody (Monocarboxylate Transporter 14) binds to endogenous Monocarboxylate Transporter 14 at the amino acid region 100-180 Internal.
Immunogen Sequence	



Western blot analysis of lysates from HUVEC and HepG2 cells, using MOT14 Antibody. The lane on the right is blocked with the synthesized peptide.



Western blot analysis of HEPG2 cells using MCT14 Polyclonal Antibody diluted at 1: 1000