

Anti-SLC16A13 antibody (370-450 C-Term) (STJ94048)

STJ94048

GENERAL INFORMATION

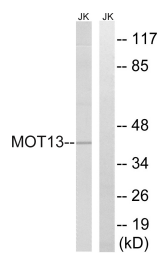
Product Type	Primary antibodies
Short Description	Rabbit polyclonal antibody anti-Monocarboxylate Transporter 13 (370-450 C-Term) is suitable for use in Western Blot and ELISA research applications.
Applications	WB, ELISA
Host/Source	Rabbit
Reactivity	Human, Rat, Mouse

PRODUCT PROPERTIES

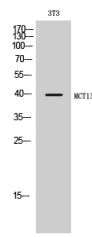
Clonality	Polyclonal
Clone ID	
Concentration	1 mg/mL
Conjugation	Unconjugated
Purification	The antibody was affinity-purified from rabbit anti-serum by affinity-chromatography.
Dilution Range	WB 1:500-1:2000 ELISA 1:5000
Formulation	PBS, 50% Glycerol, 0.5% BSA and 0.02% Sodium Azide.
Isotype	IgG
Storage Instruction	Store at -20°C for up to 1 year from the date of receipt, and avoid repeat freeze-thaw cycles.

TARGET INFORMATION

Gene ID	201232
Gene Symbol	SLC16A13
Uniprot ID	MOT13_HUMAN
Immunogen	The antiserum was produced against synthesized peptide derived from human MOT13 at amino acid range 377-426
Immunogen Region	370-450 C-Term
Specificity	SLC16A13 polyclonal antibody (Monocarboxylate Transporter 13) binds to endogenous Monocarboxylate Transporter 13 at the amino acid region 370-450 C-Term.
Immunogen Sequence	



Western blot analysis of lysates from Jurkat cells, using MOT13 Antibody. The lane on the right is blocked with the synthesized peptide.



Western blot analysis of 3T3 cells using MCT13 Polyclonal Antibody