

Anti-MCHR2 antibody (260-340 C-Term) (STJ94043)

STJ94043

GENERAL INFORMATION

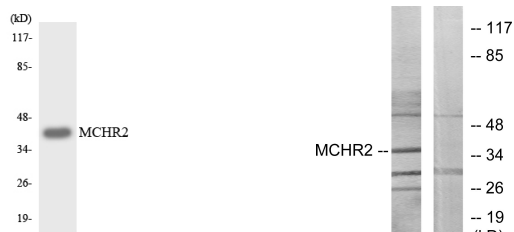
Product Type	Primary antibodies
Short Description	Rabbit polyclonal antibody anti-Melanin-Concentrating Hormone Receptor 2 (260-340 C-Term) is suitable for use in Western Blot, Immunofluorescence, Immunocytochemistry and ELISA research applications.
Applications	WB, IF, ICC, ELISA
Host/Source	Rabbit
Reactivity	Human, Rat, Mouse

PRODUCT PROPERTIES

Clonality	Polyclonal
Clone ID	
Concentration	1 mg/mL
Conjugation	Unconjugated
Purification	The antibody was affinity-purified from rabbit anti-serum by affinity-chromatography.
Dilution Range	WB 1:500-1:2000 IF 1:200-1:1000 ELISA 1:5000
Formulation	PBS, 50% Glycerol, 0.5% BSA and 0.02% Sodium Azide.
Isotype	IgG
Storage Instruction	Store at -20°C for up to 1 year from the date of receipt, and avoid repeat freeze-thaw cycles.

TARGET INFORMATION

Gene ID	84539
Gene Symbol	MCHR2
Uniprot ID	MCHR2_HUMAN
Immunogen	The antiserum was produced against synthesized peptide derived from human MCHR2 at amino acid range 291-340
Immunogen Region	260-340 C-Term
Specificity	MCHR2 polyclonal antibody (Melanin-Concentrating Hormone Receptor 2) binds to endogenous Melanin-Concentrating Hormone Receptor 2 at the amino acid region 260-340 C-Term.
Immunogen Sequence	



This product is suitable for in-vitro studies under the RESEARCH USE ONLY [RUO] licence. This product must not be used as for diagnostic or other medical purposes.
 St John's Laboratory Ltd, Knowledge Dock Business Centre, University Way, London, E16 2RD | Tel: 0208 223 3081