

Anti-CDH15 antibody (50-130 N-Term) (STJ94042)

STJ94042

GENERAL INFORMATION

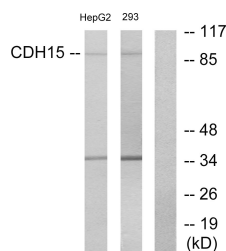
Product Type	Primary antibodies
Short Description	Rabbit polyclonal antibody anti-Cadherin-15 (50-130 N-Term) is suitable for use in Western Blot, Immunohistochemistry, Immunofluorescence and ELISA research applications.
Applications	WB, IHC-P, IF-P, ELISA
Host/Source	Rabbit
Reactivity	Human, Mouse, Rat

PRODUCT PROPERTIES

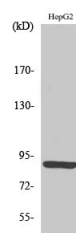
Clonality	Polyclonal
Clone ID	
Concentration	1 mg/mL
Conjugation	Unconjugated
Purification	The antibody was affinity-purified from rabbit anti-serum by affinity-chromatography.
Dilution Range	WB 1:500-1:2000 IHC 1:100-1:300 ELISA 1:10000
Formulation	PBS, 50% Glycerol, 0.5% BSA and 0.02% Sodium Azide.
Isotype	IgG
Storage Instruction	Store at -20°C for up to 1 year from the date of receipt, and avoid repeat freeze-thaw cycles.

TARGET INFORMATION

Gene ID	1013
Gene Symbol	CDH15
Uniprot ID	CAD15_HUMAN
Immunogen	The antiserum was produced against synthesized peptide derived from human CDH15 at amino acid range 81-130
Immunogen Region	50-130 N-Term
Specificity	CDH15 polyclonal antibody (Cadherin-15) binds to endogenous Cadherin-15 at the amino acid region 50-130 N-Term.
Immunogen Sequence	



Western blot analysis of lysates from HepG2 and 293 cells, using CDH15 Antibody. The lane on the right is blocked with the synthesized peptide.



Western blot analysis of various cells using M-cadherin Polyclonal Antibody diluted at 1: 500