

Anti-MBD3 antibody (190-270 C-Term) (STJ94036)

STJ94036

GENERAL INFORMATION

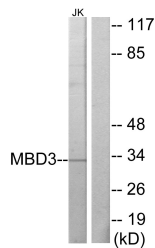
Product Type	Primary antibodies
Short Description	Rabbit polyclonal antibody anti-Methyl-Cpg-Binding Domain Protein 3 (190-270 C-Term) is suitable for use in Western Blot and ELISA research applications.
Applications	WB, ELISA
Host/Source	Rabbit
Reactivity	Human, Mouse

PRODUCT PROPERTIES

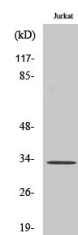
Clonality	Polyclonal
Clone ID	
Concentration	1 mg/mL
Conjugation	Unconjugated
Purification	The antibody was affinity-purified from rabbit anti-serum by affinity-chromatography.
Dilution Range	WB 1:500-1:2000 ELISA 1:10000
Formulation	PBS, 50% Glycerol, 0.5% BSA and 0.02% Sodium Azide.
Isotype	IgG
Storage	Store at -20°C for up to 1 year from the date of receipt, and avoid repeat freeze-thaw cycles.
Instruction	

TARGET INFORMATION

Gene ID	53615
Gene Symbol	MBD3
Uniprot ID	MBD3_HUMAN
Immunogen	The antiserum was produced against synthesized peptide derived from human MBD3 at amino acid range 221-270
Immunogen Region	190-270 C-Term
Specificity	MBD3 polyclonal antibody (Methyl-Cpg-Binding Domain Protein 3) binds to endogenous Methyl-Cpg-Binding Domain Protein 3 at the amino acid region 190-270 C-Term.
Immunogen Sequence	



Western blot analysis of lysates from Jurkat cells, using MBD3 Antibody. The lane on the right is blocked with the synthesized peptide.



Western blot analysis of various cells using MBD3 Polyclonal Antibody

This product is suitable for in-vitro studies under the RESEARCH USE ONLY [RUO] licence. This product must not be used as for diagnostic or other medical purposes.
St John's Laboratory Ltd, Knowledge Dock Business Centre, University Way, London, E16 2RD | Tel: 0208 223 3081