

Anti-KCNMA1 antibody (Internal) (STJ94031)

STJ94031

GENERAL INFORMATION

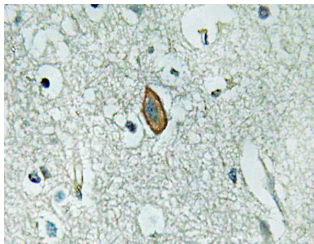
Product Type	Primary antibodies
Short Description	Rabbit polyclonal antibody anti-Calcium-Activated Potassium Channel Subunit Alpha-1 (Internal) is suitable for use in Western Blot, Immunohistochemistry, Immunofluorescence and ELISA research applications.
Applications	WB, IHC-P, IF-P, ELISA
Host/Source	Rabbit
Reactivity	Human, Mouse, Rat

PRODUCT PROPERTIES

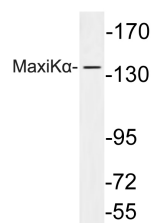
Clonality	Polyclonal
Clone ID	
Concentration	1 mg/mL
Conjugation	Unconjugated
Purification	The antibody was affinity-purified from rabbit anti-serum by affinity-chromatography.
Dilution Range	WB 1:500-1:2000 IHC 1:100-1:300 ELISA 1:40000
Formulation	PBS, 50% Glycerol, 0.5% BSA and 0.02% Sodium Azide.
Isotype	IgG
Storage Instruction	Store at -20°C for up to 1 year from the date of receipt, and avoid repeat freeze-thaw cycles.

TARGET INFORMATION

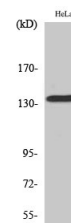
Gene ID	3778
Gene Symbol	KCNMA1
Uniprot ID	KCMA1_HUMAN
Immunogen	The antiserum was produced against synthesized peptide derived from human MaxiKalpha at amino acid range 721-770
Immunogen Region	Internal
Specificity	KCNMA1 polyclonal antibody (Calcium-Activated Potassium Channel Subunit Alpha-1) binds to endogenous Calcium-Activated Potassium Channel Subunit Alpha-1 at the amino acid region Internal.
Immunogen Sequence	



Immunohistochemistry analysis of MaxiK Alpha antibody in paraffin-embedded human brain tissue.



Western blot analysis of lysate from HeLa cells, using MaxiK Alpha antibody.



Western blot analysis of various cells using MaxiK Alpha Polyclonal Antibody

This product is suitable for in-vitro studies under the RESEARCH USE ONLY [RUO] licence. This product must not be used as for diagnostic or other medical purposes.
St John's Laboratory Ltd, Knowledge Dock Business Centre, University Way, London, E16 2RD | Tel: 0208 223 3081