

Anti-MASP2 antibody (200-280 Internal) (STJ94021)

STJ94021

GENERAL INFORMATION

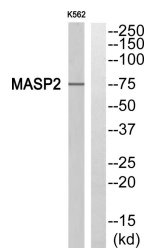
Product Type	Primary antibodies
Short Description	Rabbit polyclonal antibody anti-Mannan-Binding Lectin Serine Protease 2 (200-280 Internal) is suitable for use in Western Blot and ELISA research applications.
Applications	WB, ELISA
Host/Source	Rabbit
Reactivity	Human, Rat, Mouse

PRODUCT PROPERTIES

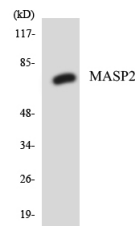
Clonality	Polyclonal
Clone ID	
Concentration	1 mg/mL
Conjugation	Unconjugated
Purification	The antibody was affinity-purified from rabbit anti-serum by affinity-chromatography.
Dilution Range	WB 1:500-1:2000 ELISA 1:20000
Formulation	PBS, 50% Glycerol, 0.5% BSA and 0.02% Sodium Azide.
Isotype	IgG
Storage Instruction	Store at -20°C for up to 1 year from the date of receipt, and avoid repeat freeze-thaw cycles.

TARGET INFORMATION

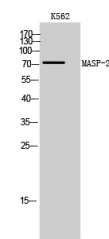
Gene ID	10747
Gene Symbol	MASP2
Uniprot ID	MASP2_HUMAN
Immunogen	The antiserum was produced against synthesized peptide derived from human MASP2 at amino acid range 227-276
Immunogen Region	200-280 Internal
Specificity	MASP2 polyclonal antibody (Mannan-Binding Lectin Serine Protease 2) binds to endogenous Mannan-Binding Lectin Serine Protease 2 at the amino acid region 200-280 Internal.
Immunogen Sequence	



Western blot analysis of MASP2 Antibody. The lane on the right is blocked with the MASP2 peptide.



Western blot analysis of the lysates from HT-29 cells using MASP2 antibody.



Western blot analysis of K562 cells using MASP-2 Polyclonal Antibody.

This product is suitable for in-vitro studies under the RESEARCH USE ONLY [RUO] licence. This product must not be used as for diagnostic or other medical purposes.
St John's Laboratory Ltd, Knowledge Dock Business Centre, University Way, London, E16 2RD | Tel: 0208 223 3081