

## Anti-MAP9 antibody (90-170 Internal) (STJ94003)

STJ94003

### GENERAL INFORMATION

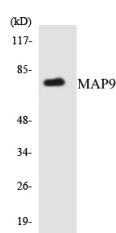
<b>Product Type</b>	Primary antibodies
<b>Short Description</b>	Rabbit polyclonal antibody anti-Microtubule-Associated Protein 9 (90-170 Internal) is suitable for use in Western Blot and ELISA research applications.
<b>Applications</b>	WB, ELISA
<b>Host/Source</b>	Rabbit
<b>Reactivity</b>	Human, Rat, Mouse

### PRODUCT PROPERTIES

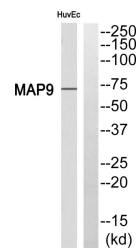
<b>Clonality</b>	Polyclonal
<b>Clone ID</b>	
<b>Concentration</b>	1 mg/mL
<b>Conjugation</b>	Unconjugated
<b>Purification</b>	The antibody was affinity-purified from rabbit anti-serum by affinity-chromatography.
<b>Dilution Range</b>	WB 1:500-1:2000 ELISA 1:40000
<b>Formulation</b>	PBS, 50% Glycerol, 0.5% BSA and 0.02% Sodium Azide.
<b>Isotype</b>	IgG
<b>Storage</b>	Store at -20°C for up to 1 year from the date of receipt, and avoid repeat freeze-thaw cycles.
<b>Instruction</b>	

### TARGET INFORMATION

<b>Gene ID</b>	<a href="#">79884</a>
<b>Gene Symbol</b>	<a href="#">MAP9</a>
<b>Uniprot ID</b>	<a href="#">MAP9_HUMAN</a>
<b>Immunogen</b>	The antiserum was produced against synthesized peptide derived from human MAP9 at amino acid range 121-170
<b>Immunogen Region</b>	90-170 Internal
<b>Specificity</b>	MAP9 polyclonal antibody (Microtubule-Associated Protein 9) binds to endogenous Microtubule-Associated Protein 9 at the amino acid region 90-170 Internal.
<b>Immunogen Sequence</b>	



Western blot analysis of the lysates from HUVEC cells using MAP9 antibody.



Western blot analysis of MAP9 Antibody. The lane on the right is blocked with the MAP9 peptide.

This product is suitable for in-vitro studies under the RESEARCH USE ONLY [RUO] licence. This product must not be used as for diagnostic or other medical purposes.  
St John's Laboratory Ltd, Knowledge Dock Business Centre, University Way, London, E16 2RD | Tel: 0208 223 3081