

## Anti-MAN1B1 antibody (100-180 Internal) (STJ93998)

STJ93998

### GENERAL INFORMATION

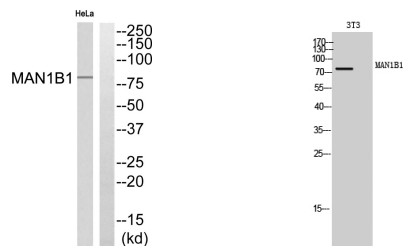
<b>Product Type</b>	Primary antibodies
<b>Short Description</b>	Rabbit polyclonal antibody anti-Endoplasmic Reticulum Mannosyl-Oligosaccharide 1-2-Alpha-Mannosidase (100-180 Internal) is suitable for use in Western Blot and ELISA research applications.
<b>Applications</b>	WB, ELISA
<b>Host/Source</b>	Rabbit
<b>Reactivity</b>	Human, Rat, Mouse

### PRODUCT PROPERTIES

<b>Clonality</b>	Polyclonal
<b>Clone ID</b>	
<b>Concentration</b>	1 mg/mL
<b>Conjugation</b>	Unconjugated
<b>Purification</b>	The antibody was affinity-purified from rabbit anti-serum by affinity-chromatography.
<b>Dilution</b>	WB 1:500-1:2000
<b>Range</b>	ELISA 1:10000
<b>Formulation</b>	PBS, 50% Glycerol, 0.5% BSA and 0.02% Sodium Azide.
<b>Isotype</b>	IgG
<b>Storage</b>	Store at -20°C for up to 1 year from the date of receipt, and avoid repeat freeze-thaw cycles.
<b>Instruction</b>	

### TARGET INFORMATION

<b>Gene ID</b>	11253
<b>Gene Symbol</b>	MAN1B1
<b>Uniprot ID</b>	MA1B1_HUMAN
<b>Immunogen</b>	Synthesized peptide derived from MAN1B1. at amino acid range: 100-180
<b>Immunogen Region</b>	100-180 Internal
<b>Specificity</b>	MAN1B1 polyclonal antibody (Endoplasmic Reticulum Mannosyl-Oligosaccharide 1-2-Alpha-Mannosidase) binds to endogenous Endoplasmic Reticulum Mannosyl-Oligosaccharide 1-2-Alpha-Mannosidase at the amino acid region 100-180 Internal.
<b>Immunogen Sequence</b>	



Western blot analysis of MAN1B1 Antibody. The lane on the right is blocked with the MAN1B1 peptide.

Western blot analysis of 3T3 cells using MAN1B1 Polyclonal Antibody

This product is suitable for in-vitro studies under the RESEARCH USE ONLY [RUO] licence. This product must not be used as for diagnostic or other medical purposes.  
 St John's Laboratory Ltd, Knowledge Dock Business Centre, University Way, London, E16 2RD | Tel: 0208 223 3081