

## Anti-SCGB2A2 antibody (10-90 Internal) (STJ93996)

STJ93996

### GENERAL INFORMATION

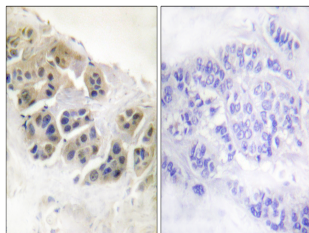
<b>Product Type</b>	Primary antibodies
<b>Short Description</b>	Rabbit polyclonal antibody anti-Mammaglobin-A (10-90 Internal) is suitable for use in Western Blot, Immunohistochemistry, Immunofluorescence, Immunocytochemistry and ELISA research applications.
<b>Applications</b>	WB, IHC-P, IF, ICC, ELISA
<b>Host/Source</b>	Rabbit
<b>Reactivity</b>	Human, Rat

### PRODUCT PROPERTIES

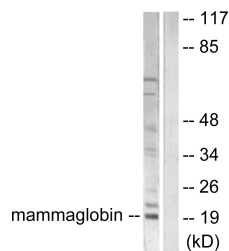
<b>Clonality</b>	Polyclonal
<b>Clone ID</b>	
<b>Concentration</b>	1 mg/mL
<b>Conjugation</b>	Unconjugated
<b>Purification</b>	The antibody was affinity-purified from rabbit anti-serum by affinity-chromatography.
<b>Dilution Range</b>	WB 1:500-1:2000 IHC 1:100-1:300 IF 1:200-1:1000 ELISA 1:5000
<b>Formulation</b>	PBS, 50% Glycerol, 0.5% BSA and 0.02% Sodium Azide.
<b>Isotype</b>	IgG
<b>Storage Instruction</b>	Store at -20°C for up to 1 year from the date of receipt, and avoid repeat freeze-thaw cycles.

### TARGET INFORMATION

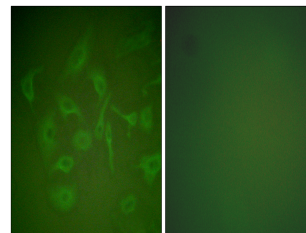
<b>Gene ID</b>	4250
<b>Gene Symbol</b>	SCGB2A2
<b>Uniprot ID</b>	SG2A2_HUMAN
<b>Immunogen</b>	The antiserum was produced against synthesized peptide derived from human Mammaglobin at amino acid range 41-90
<b>Immunogen Region</b>	10-90 Internal
<b>Specificity</b>	SCGB2A2 polyclonal antibody (Mammaglobin-A) binds to endogenous Mammaglobin-A at the amino acid region 10-90 Internal.
<b>Immunogen Sequence</b>	



Immunohistochemistry analysis of paraffin-embedded human breast carcinoma tissue, using Mammaglobin Antibody. The picture on the right is blocked with the synthesized peptide.



Western blot analysis of lysates from HepG2 cells, using Mammaglobin Antibody. The lane on the right is blocked with the synthesized peptide.



Immunofluorescence analysis of HepG2 cells, using Mammaglobin Antibody. The picture on the right is blocked with the synthesized peptide.

This product is suitable for in-vitro studies under the RESEARCH USE ONLY [RUO] licence. This product must not be used as for diagnostic or other medical purposes.  
St John's Laboratory Ltd, Knowledge Dock Business Centre, University Way, London, E16 2RD | Tel: 0208 223 3081