

Anti-MALT1 antibody (270-350 Internal) (STJ93995)

STJ93995

GENERAL INFORMATION

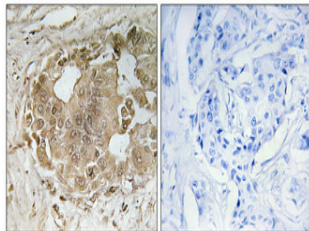
Product Type	Primary antibodies
Short Description	Rabbit polyclonal antibody anti-Mucosa-Associated Lymphoid Tissue Lymphoma Translocation Protein 1 (270-350 Internal) is suitable for use in Western Blot, Immunohistochemistry, Immunofluorescence, Immunocytochemistry and ELISA research applications.
Applications	WB, IHC-P, IF, ICC, ELISA
Host/Source	Rabbit
Reactivity	Human, Mouse

PRODUCT PROPERTIES

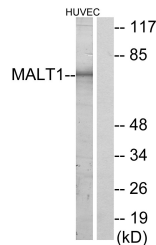
Clonality	Polyclonal
Clone ID	
Concentration	1 mg/mL
Conjugation	Unconjugated
Purification	The antibody was affinity-purified from rabbit anti-serum by affinity-chromatography.
Dilution	WB 1:500-1:2000
Range	IHC 1:100-1:300 IF 1:200-1:1000 ELISA 1:10000
Formulation	PBS, 50% Glycerol, 0.5% BSA and 0.02% Sodium Azide.
Isotype	IgG
Storage Instruction	Store at -20°C for up to 1 year from the date of receipt, and avoid repeat freeze-thaw cycles.

TARGET INFORMATION

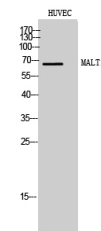
Gene ID	10892
Gene Symbol	MALT1
Uniprot ID	MALT1_HUMAN
Immunogen	The antiserum was produced against synthesized peptide derived from human MALT1 at amino acid range 301-350
Immunogen Region	270-350 Internal
Specificity	MALT1 polyclonal antibody (Mucosa-Associated Lymphoid Tissue Lymphoma Translocation Protein 1) binds to endogenous Mucosa-Associated Lymphoid Tissue Lymphoma Translocation Protein 1 at the amino acid region 270-350 Internal.
Immunogen Sequence	



Immunohistochemical analysis of paraffin-embedded Human breast cancer. Antibody was diluted at 1:100 (4°C overnight). High-pressure and temperature Tris-EDTA, pH8.0 was used for antigen retrieval. Negative control (right) obtained from antibody was pre-absorbed by immunogen peptide.



Western blot analysis of lysates from HUVEC cells, using MALT1 Antibody. The lane on the right is blocked with the synthesized peptide.



Western blot analysis of HUVEC cells using MALT1 Polyclonal Antibody

This product is suitable for in-vitro studies under the RESEARCH USE ONLY [RUO] licence. This product must not be used as for diagnostic or other medical purposes.
St John's Laboratory Ltd, Knowledge Dock Business Centre, University Way, London, E16 2RD | Tel: 0208 223 3081