

Anti-ME1 antibody (440-520 C-Term) (STJ93994)

STJ93994

GENERAL INFORMATION

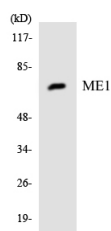
Product Type	Primary antibodies
Short Description	Rabbit polyclonal antibody anti-Nadp-Dependent Malic Enzyme (440-520 C-Term) is suitable for use in Western Blot and ELISA research applications.
Applications	WB, ELISA
Host/Source	Rabbit
Reactivity	Human, Mouse, Rat

PRODUCT PROPERTIES

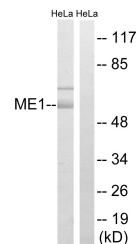
Clonality	Polyclonal
Clone ID	
Concentration	1 mg/mL
Conjugation	Unconjugated
Purification	The antibody was affinity-purified from rabbit anti-serum by affinity-chromatography.
Dilution Range	WB 1:500-1:2000 ELISA 1:40000
Formulation	PBS, 50% Glycerol, 0.5% BSA and 0.02% Sodium Azide.
Isotype	IgG
Storage	Store at -20°C for up to 1 year from the date of receipt, and avoid repeat freeze-thaw cycles.
Instruction	

TARGET INFORMATION

Gene ID	4199
Gene Symbol	ME1
Uniprot ID	MAOX_HUMAN
Immunogen	The antiserum was produced against synthesized peptide derived from human ME1 at amino acid range 468-517
Immunogen Region	440-520 C-Term
Specificity	ME1 polyclonal antibody (Nadp-Dependent Malic Enzyme) binds to endogenous Nadp-Dependent Malic Enzyme at the amino acid region 440-520 C-Term.
Immunogen Sequence	



Western blot analysis of the lysates from HeLa cells using ME1 antibody.



Western blot analysis of lysates from HeLa cells, using ME1 Antibody. The lane on the right is blocked with the synthesized peptide.