

## Anti-MAGI2 antibody (190-270 Internal) (STJ93992)

STJ93992

### GENERAL INFORMATION

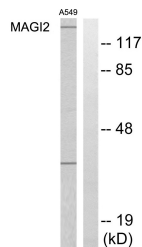
<b>Product Type</b>	Primary antibodies
<b>Short Description</b>	Rabbit polyclonal antibody anti-Membrane-Associated Guanylate Kinase-Ww And PdZ Domain-Containing Protein 2 (190-270 Internal) is suitable for use in Western Blot, Immunohistochemistry, Immunofluorescence and ELISA research applications.
<b>Applications</b>	WB, IHC-P, IF-P, ELISA
<b>Host/Source</b>	Rabbit
<b>Reactivity</b>	Human, Mouse, Rat

### PRODUCT PROPERTIES

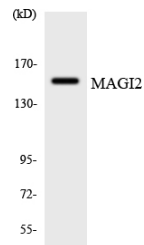
<b>Clonality</b>	Polyclonal
<b>Clone ID</b>	
<b>Concentration</b>	1 mg/mL
<b>Conjugation</b>	Unconjugated
<b>Purification</b>	The antibody was affinity-purified from rabbit anti-serum by affinity-chromatography.
<b>Dilution Range</b>	WB 1:500-1:2000 IHC 1:100-1:300 ELISA 1:20000
<b>Formulation</b>	PBS, 50% Glycerol, 0.5% BSA and 0.02% Sodium Azide.
<b>Isotype</b>	IgG
<b>Storage Instruction</b>	Store at -20°C for up to 1 year from the date of receipt, and avoid repeat freeze-thaw cycles.

### TARGET INFORMATION

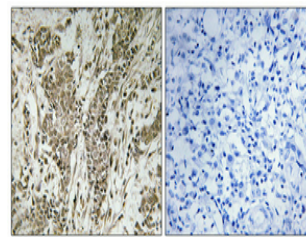
<b>Gene ID</b>	9863
<b>Gene Symbol</b>	MAGI2
<b>Uniprot ID</b>	MAGI2_HUMAN
<b>Immunogen</b>	The antiserum was produced against synthesized peptide derived from human MAGI2 at amino acid range 221-270
<b>Immunogen Region</b>	190-270 Internal
<b>Specificity</b>	MAGI2 polyclonal antibody (Membrane-Associated Guanylate Kinase-Ww And PdZ Domain-Containing Protein 2) binds to endogenous Membrane-Associated Guanylate Kinase-Ww And PdZ Domain-Containing Protein 2 at the amino acid region 190-270 Internal.
<b>Immunogen Sequence</b>	



Western blot analysis of lysates from A549 cells, using MAGI2 Antibody. The lane on the right is blocked with the synthesized peptide.



Western blot analysis of the lysates from 293 cells using MAGI2 antibody.



Immunohistochemical analysis of paraffin-embedded Human breast cancer. Antibody was diluted at 1:100 (4°C overnight). High-pressure and temperature Tris-EDTA, pH8.0 was used for antigen retrieval. Negative control (right) obtained from antibody was pre-absorbed by immunogen peptide.

This product is suitable for in-vitro studies under the RESEARCH USE ONLY [RUO] licence. This product must not be used as for diagnostic or other medical purposes.  
St John's Laboratory Ltd, Knowledge Dock Business Centre, University Way, London, E16 2RD | Tel: 0208 223 3081