

Anti-MAGEC2 antibody (160-240 Internal) (STJ93991)

STJ93991

GENERAL INFORMATION

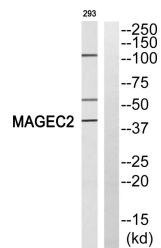
Product Type	Primary antibodies
Short Description	Rabbit polyclonal antibody anti-Melanoma-Associated antigen C2 (160-240 Internal) is suitable for use in Western Blot and ELISA research applications.
Applications	WB, ELISA
Host/Source	Rabbit
Reactivity	Human, Rat, Mouse

PRODUCT PROPERTIES

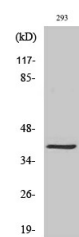
Clonality	Polyclonal
Clone ID	
Concentration	1 mg/mL
Conjugation	Unconjugated
Purification	The antibody was affinity-purified from rabbit anti-serum by affinity-chromatography.
Dilution Range	WB 1:500-1:2000 ELISA 1:5000
Formulation	PBS, 50% Glycerol, 0.5% BSA and 0.02% Sodium Azide.
Isotype	IgG
Storage Instruction	Store at -20°C for up to 1 year from the date of receipt, and avoid repeat freeze-thaw cycles.

TARGET INFORMATION

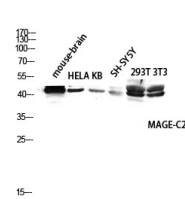
Gene ID	51438
Gene Symbol	MAGEC2
Uniprot ID	MAGC2_HUMAN
Immunogen	Synthesized peptide derived from MAGEC-2. at amino acid range: 160-240
Immunogen Region	160-240 Internal
Specificity	MAGEC2 polyclonal antibody (Melanoma-Associated Antigen C2) binds to endogenous Melanoma-Associated Antigen C2 at the amino acid region 160-240 Internal.
Immunogen Sequence	



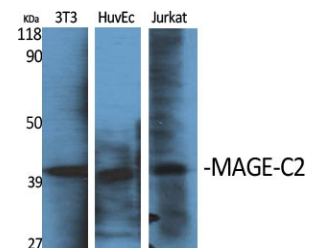
Western blot analysis of MAGEC2 Antibody. The lane on the right is blocked with the MAGEC2 peptide.



Western blot analysis of 293 cells using MAGE-C2 Polyclonal Antibody diluted at 1: 1000



Western blot analysis of mouse-brain HELA KB SH-SY5Y 293T 3T3 lysis using MAGE-C2 antibody. Antibody was diluted at 1:1000



Western blot analysis of various cells using MAGE-C2 Polyclonal Antibody diluted at 1: 1000

This product is suitable for in-vitro studies under the RESEARCH USE ONLY [RUO] licence. This product must not be used as for diagnostic or other medical purposes.
St John's Laboratory Ltd, Knowledge Dock Business Centre, University Way, London, E16 2RD | Tel: 0208 223 3081