

Anti-MAGEA5P antibody (40-120 Internal) (STJ93990)

STJ93990

GENERAL INFORMATION

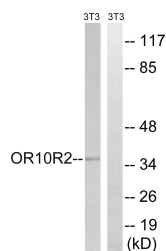
Product Type	Primary antibodies
Short Description	Rabbit polyclonal antibody anti-Putative Melanoma-Associated antigen 5p (40-120 Internal) is suitable for use in Western Blot and ELISA research applications.
Applications	WB, ELISA
Host/Source	Rabbit
Reactivity	Human, Rat, Mouse

PRODUCT PROPERTIES

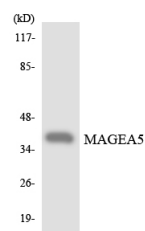
Clonality	Polyclonal
Clone ID	
Concentration	1 mg/mL
Conjugation	Unconjugated
Purification	The antibody was affinity-purified from rabbit anti-serum by affinity-chromatography.
Dilution Range	WB 1:500-1:2000 ELISA 1:10000
Formulation	PBS, 50% Glycerol, 0.5% BSA and 0.02% Sodium Azide.
Isotype	IgG
Storage	Store at -20°C for up to 1 year from the date of receipt, and avoid repeat freeze-thaw cycles.
Instruction	

TARGET INFORMATION

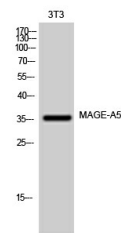
Gene ID	100533997/4104
Gene Symbol	MAGEA5P
Uniprot ID	MAGA5_HUMAN
Immunogen	The antiserum was produced against synthesized peptide derived from human MAGEA5 at amino acid range 68-117
Immunogen Region	40-120 Internal
Specificity	MAGEA5P polyclonal antibody (Putative Melanoma-Associated Antigen 5p) binds to endogenous Putative Melanoma-Associated Antigen 5p at the amino acid region 40-120 Internal.
Immunogen Sequence	



Western blot analysis of lysates from NIH/3T3 cells, using MAGEA5 Antibody. The lane on the right is blocked with the synthesized peptide.



Western blot analysis of the lysates from K562 cells using MAGEA5 antibody.



Western blot analysis of 3T3 cells using MAGE-A5 Polyclonal Antibody