

Anti-MAGEA1 antibody (230-310 C-Term) (STJ93988)

STJ93988

GENERAL INFORMATION

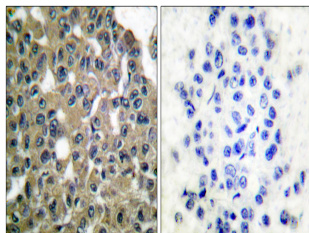
Product Type	Primary antibodies
Short Description	Rabbit polyclonal antibody anti-Melanoma-Associated antigen 1 (230-310 C-Term) is suitable for use in Western Blot, Immunohistochemistry, Immunofluorescence and ELISA research applications.
Applications	WB, IHC-P, IF-P, ELISA
Host/Source	Rabbit
Reactivity	Human, Rat, Mouse

PRODUCT PROPERTIES

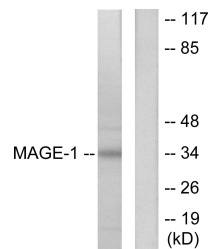
Clonality	Polyclonal
Clone ID	
Concentration	1 mg/mL
Conjugation	Unconjugated
Purification	The antibody was affinity-purified from rabbit anti-serum by affinity-chromatography.
Dilution Range	WB 1:500-1:2000 IHC 1:100-1:300 ELISA 1:10000
Formulation	PBS, 50% Glycerol, 0.5% BSA and 0.02% Sodium Azide.
Isotype	IgG
Storage Instruction	Store at -20°C for up to 1 year from the date of receipt, and avoid repeat freeze-thaw cycles.

TARGET INFORMATION

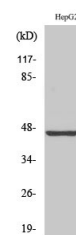
Gene ID	4100
Gene Symbol	MAGEA1
Uniprot ID	MAGA1_HUMAN
Immunogen	The antiserum was produced against synthesized peptide derived from human MAGE-1 at amino acid range 260-309
Immunogen Region	230-310 C-Term
Specificity	MAGEA1 polyclonal antibody (Melanoma-Associated Antigen 1) binds to endogenous Melanoma-Associated Antigen 1 at the amino acid region 230-310 C-Term.
Immunogen Sequence	



Immunohistochemistry analysis of paraffin-embedded human breast carcinoma tissue, using MAGE-1 Antibody. The picture on the right is blocked with the synthesized peptide.



Western blot analysis of lysates from HepG2 cells, using MAGE-1 Antibody. The lane on the right is blocked with the synthesized peptide.



Western blot analysis of various cells using MAGE-1 Polyclonal Antibody