

## Anti-MADD antibody (720-800 Internal) (STJ93985)

STJ93985

### GENERAL INFORMATION

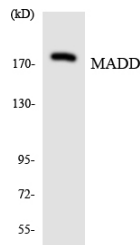
<b>Product Type</b>	Primary antibodies
<b>Short Description</b>	Rabbit polyclonal antibody anti-Map Kinase-Activating Death Domain Protein (720-800 Internal) is suitable for use in Western Blot, Immunohistochemistry, Immunofluorescence, Immunocytochemistry and ELISA research applications.
<b>Applications</b>	WB, IHC-P, IF, ICC, ELISA
<b>Host/Source</b>	Rabbit
<b>Reactivity</b>	Human, Mouse, Rat

### PRODUCT PROPERTIES

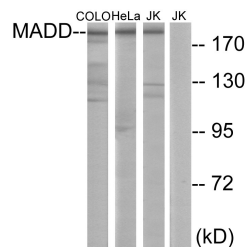
<b>Clonality</b>	Polyclonal
<b>Clone ID</b>	
<b>Concentration</b>	1 mg/mL
<b>Conjugation</b>	Unconjugated
<b>Purification</b>	The antibody was affinity-purified from rabbit anti-serum by affinity-chromatography.
<b>Dilution Range</b>	WB 1:500-1:2000 IHC 1:100-1:300 IF 1:200-1:1000 ELISA 1:5000
<b>Formulation</b>	PBS, 50% Glycerol, 0.5% BSA and 0.02% Sodium Azide.
<b>Isotype</b>	IgG
<b>Storage Instruction</b>	Store at -20°C for up to 1 year from the date of receipt, and avoid repeat freeze-thaw cycles.

### TARGET INFORMATION

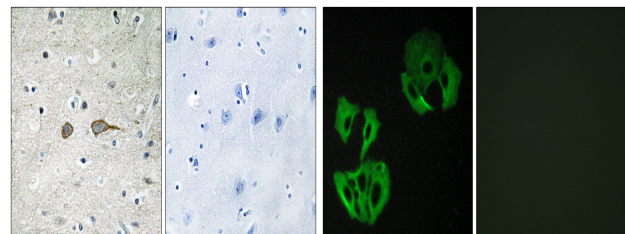
<b>Gene ID</b>	8567
<b>Gene Symbol</b>	MADD
<b>Uniprot ID</b>	MADD_HUMAN
<b>Immunogen</b>	The antiserum was produced against synthesized peptide derived from human MADD at amino acid range 751-800
<b>Immunogen Region</b>	720-800 Internal
<b>Specificity</b>	MADD polyclonal antibody (Map Kinase-Activating Death Domain Protein) binds to endogenous Map Kinase-Activating Death Domain Protein at the amino acid region 720-800 Internal.
<b>Immunogen Sequence</b>	



Western blot analysis of the lysates from HepG2 cells using MADD antibody.



Western blot analysis of lysates from COLO, HeLa, and Jurkat cells, using MADD Antibody. The lane on the right is blocked with the synthesized peptide.



Immunohistochemistry analysis of paraffin-embedded human brain tissue, using MADD Antibody. The picture on the right is blocked with the synthesized peptide.

Immunofluorescence analysis of A549 cells, using MADD Antibody. The picture on the right is blocked with the synthesized peptide.

This product is suitable for in-vitro studies under the RESEARCH USE ONLY [RUO] licence. This product must not be used as for diagnostic or other medical purposes.  
St John's Laboratory Ltd, Knowledge Dock Business Centre, University Way, London, E16 2RD | Tel: 0208 223 3081