

Anti-MAD2L1BP antibody (10-90 N-Term) (STJ93984)

STJ93984

GENERAL INFORMATION

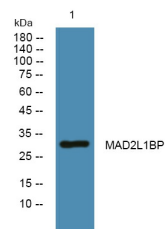
Product Type	Primary antibodies
Short Description	Rabbit polyclonal antibody anti-Mad211-Binding Protein (10-90 N-Term) is suitable for use in Western Blot and ELISA research applications.
Applications	WB, ELISA
Host/Source	Rabbit
Reactivity	Human, Rat, Mouse

PRODUCT PROPERTIES

Clonality	Polyclonal
Clone ID	
Concentration	1 mg/mL
Conjugation	Unconjugated
Purification	The antibody was affinity-purified from rabbit anti-serum by affinity-chromatography.
Dilution Range	WB 1:500-1:2000 ELISA 1:10000
Formulation	PBS, 50% Glycerol, 0.5% BSA and 0.02% Sodium Azide.
Isotype	IgG
Storage Instruction	Store at 20°C for up to 1 year from the date of receipt, and avoid repeat freeze-thaw cycles.

TARGET INFORMATION

Gene ID	9587
Gene Symbol	MAD2L1BP
Uniprot ID	MD2BP_HUMAN
Immunogen	Synthesized peptide derived from MAD2L1BP. at amino acid range: 10-90
Immunogen Region	10-90 N-Term
Specificity	MAD2L1BP polyclonal antibody (Mad211-Binding Protein) binds to endogenous Mad211-Binding Protein at the amino acid region 10-90 N-Term.
Immunogen Sequence	



Western blot analysis of lysates from SH-SY5Y cells, primary antibody was diluted at 1:1000, 4°C over night