

Anti-MAD2L1 antibody (60-140 Internal) (STJ93983)

STJ93983

GENERAL INFORMATION

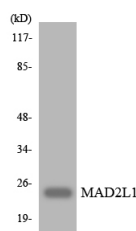
Product Type	Primary antibodies
Short Description	Rabbit polyclonal antibody anti-Mitotic Spindle Assembly Checkpoint Protein Mad2a (60-140 Internal) is suitable for use in Western Blot and ELISA research applications.
Applications	WB, ELISA
Host/Source	Rabbit
Reactivity	Human, Rat, Mouse

PRODUCT PROPERTIES

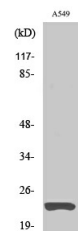
Clonality	Polyclonal
Clone ID	
Concentration	1 mg/mL
Conjugation	Unconjugated
Purification	The antibody was affinity-purified from rabbit anti-serum by affinity-chromatography.
Dilution	WB 1:500-1:2000
Range	ELISA 1:5000
Formulation	PBS, 50% Glycerol, 0.5% BSA and 0.02% Sodium Azide.
Isotype	IgG
Storage	Store at -20°C for up to 1 year from the date of receipt, and avoid repeat freeze-thaw cycles.
Instruction	

TARGET INFORMATION

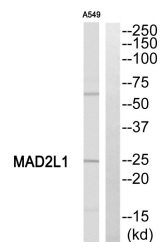
Gene ID	4085
Gene Symbol	MAD2L1
Uniprot ID	MD2L1_HUMAN
Immunogen	The antiserum was produced against synthesized peptide derived from human MAD2L1 at amino acid range 91-140
Immunogen Region	60-140 Internal
Specificity	MAD2L1 polyclonal antibody (Mitotic Spindle Assembly Checkpoint Protein Mad2a) binds to endogenous Mitotic Spindle Assembly Checkpoint Protein Mad2a at the amino acid region 60-140 Internal.
Immunogen Sequence	



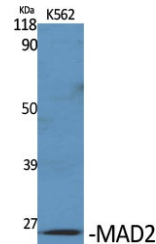
Western blot analysis of the lysates from HUVEC cells using MAD2L1 antibody.



Western blot analysis of A549 cells using MAD2L1 Polyclonal Antibody diluted at 1: 1000



Western blot analysis of MAD2L1 Antibody. The lane on the right is blocked with the MAD2L1 peptide.



Western blot analysis of various cells using MAD2L1 Polyclonal Antibody diluted at 1: 1000

This product is suitable for in-vitro studies under the RESEARCH USE ONLY [RUO] licence. This product must not be used as for diagnostic or other medical purposes.
 St John's Laboratory Ltd, Knowledge Dock Business Centre, University Way, London, E16 2RD | Tel: 0208 223 3081