

Anti-MAD1L1 antibody (370-450) (STJ93982)

STJ93982

GENERAL INFORMATION

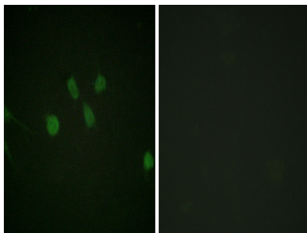
Product Type	Primary antibodies
Short Description	Rabbit polyclonal antibody anti-Mitotic Spindle Assembly Checkpoint Protein Mad1 (370-450) is suitable for use in Immunofluorescence, Immunocytochemistry and ELISA research applications.
Applications	IF, ICC, ELISA
Host/Source	Rabbit
Reactivity	Human, Rat, Mouse

PRODUCT PROPERTIES

Clonality	Polyclonal
Clone ID	
Concentration	1 mg/mL
Conjugation	Unconjugated
Purification	The antibody was affinity-purified from rabbit anti-serum by affinity-chromatography.
Dilution Range	IF 1:200-1:1000 ELISA 1:10000
Formulation	PBS, 50% Glycerol, 0.5% BSA and 0.02% Sodium Azide.
Isotype	IgG
Storage	Store at -20°C for up to 1 year from the date of receipt, and avoid repeat freeze-thaw cycles.
Instruction	

TARGET INFORMATION

Gene ID	8379
Gene Symbol	MAD1L1
Uniprot ID	MD1L1_HUMAN
Immunogen	The antiserum was produced against synthesized peptide derived from human MAD1 at amino acid range 394-443
Immunogen Region	370-450
Specificity	MAD1L1 polyclonal antibody (Mitotic Spindle Assembly Checkpoint Protein Mad1) binds to endogenous Mitotic Spindle Assembly Checkpoint Protein Mad1 at the amino acid region 370-450.
Immunogen Sequence	



Immunofluorescence analysis of NIH/3T3 cells, using MAD1L1 Antibody. The picture on the right is blocked with the synthesized peptide.