

Anti-CHRM4 antibody (210-290 Internal) (STJ93978)

STJ93978

GENERAL INFORMATION

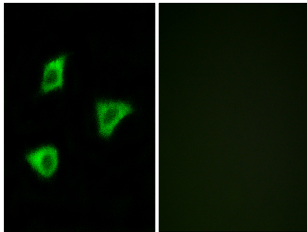
Product Type	Primary antibodies
Short Description	Rabbit polyclonal antibody anti-Muscarinic Acetylcholine Receptor M4 (210-290 Internal) is suitable for use in Western Blot, Immunofluorescence, Immunocytochemistry and ELISA research applications.
Applications	WB, IF, ICC, ELISA
Host/Source	Rabbit
Reactivity	Human, Mouse, Rat

PRODUCT PROPERTIES

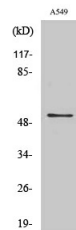
Clonality	Polyclonal
Clone ID	
Concentration	1 mg/mL
Conjugation	Unconjugated
Purification	The antibody was affinity-purified from rabbit anti-serum by affinity-chromatography.
Dilution Range	WB 1:500-1:2000 IF 1:200-1:1000 ELISA 1:10000
Formulation	PBS, 50% Glycerol, 0.5% BSA and 0.02% Sodium Azide.
Isotype	IgG
Storage Instruction	Store at -20°C for up to 1 year from the date of receipt, and avoid repeat freeze-thaw cycles.

TARGET INFORMATION

Gene ID	1132
Gene Symbol	CHRM4
Uniprot ID	ACM4_HUMAN
Immunogen	The antiserum was produced against synthesized peptide derived from human CHRM4 at amino acid range 236-285
Immunogen Region	210-290 Internal
Specificity	CHRM4 polyclonal antibody (Muscarinic Acetylcholine Receptor M4) binds to endogenous Muscarinic Acetylcholine Receptor M4 at the amino acid region 210-290 Internal.
Immunogen Sequence	



Immunofluorescence analysis of LOVO cells, using CHRM4 Antibody. The picture on the right is blocked with the synthesized peptide.



Western blot analysis of various cells using mACHR M4 Polyclonal Antibody

This product is suitable for in-vitro studies under the RESEARCH USE ONLY [RUO] licence. This product must not be used as for diagnostic or other medical purposes.
St John's Laboratory Ltd, Knowledge Dock Business Centre, University Way, London, E16 2RD | Tel: 0208 223 3081