

## Anti-CHRM2 antibody (160-240 Internal) (STJ93977)

STJ93977

### GENERAL INFORMATION

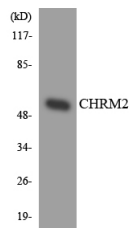
<b>Product Type</b>	Primary antibodies
<b>Short Description</b>	Rabbit polyclonal antibody anti-Muscarinic Acetylcholine Receptor M2 (160-240 Internal) is suitable for use in Western Blot, Immunofluorescence, Immunocytochemistry and ELISA research applications.
<b>Applications</b>	WB, IF, ICC, ELISA
<b>Host/Source</b>	Rabbit
<b>Reactivity</b>	Human, Mouse, Rat

### PRODUCT PROPERTIES

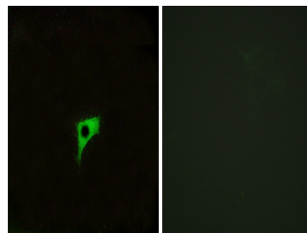
<b>Clonality</b>	Polyclonal
<b>Clone ID</b>	
<b>Concentration</b>	1 mg/mL
<b>Conjugation</b>	Unconjugated
<b>Purification</b>	The antibody was affinity-purified from rabbit anti-serum by affinity-chromatography.
<b>Dilution Range</b>	WB 1:500-1:2000 IF 1:200-1:1000 ELISA 1:20000
<b>Formulation</b>	PBS, 50% Glycerol, 0.5% BSA and 0.02% Sodium Azide.
<b>Isotype</b>	IgG
<b>Storage Instruction</b>	Store at 20°C for up to 1 year from the date of receipt, and avoid repeat freeze-thaw cycles.

### TARGET INFORMATION

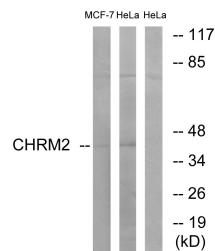
<b>Gene ID</b>	1129
<b>Gene Symbol</b>	CHRM2
<b>Uniprot ID</b>	ACM2_HUMAN
<b>Immunogen</b>	The antiserum was produced against synthesized peptide derived from human CHRM2 at amino acid range 185-234
<b>Immunogen Region</b>	160-240 Internal
<b>Specificity</b>	CHRM2 polyclonal antibody (Muscarinic Acetylcholine Receptor M2) binds to endogenous Muscarinic Acetylcholine Receptor M2 at the amino acid region 160-240 Internal.
<b>Immunogen Sequence</b>	



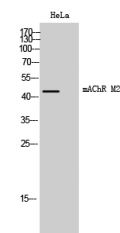
Western blot analysis of the lysates from HUVEC cells using CHRM2 antibody.



Immunofluorescence analysis of LOVO cells, using CHRM2 Antibody. The picture on the right is blocked with the synthesized peptide.



Western blot analysis of lysates from HeLa and MCF-7 cells, using CHRM2 Antibody. The lane on the right is blocked with the synthesized peptide.



Western blot analysis of HeLa cells using mACHR M2 Polyclonal Antibody

This product is suitable for in-vitro studies under the RESEARCH USE ONLY [RUO] licence. This product must not be used as for diagnostic or other medical purposes.  
 St John's Laboratory Ltd, Knowledge Dock Business Centre, University Way, London, E16 2RD | Tel: 0208 223 3081