

Anti-CHRM1 antibody (270-350 Internal) (STJ93976)

STJ93976

GENERAL INFORMATION

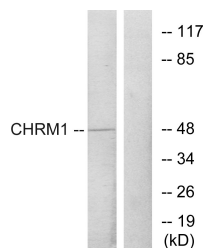
Product Type	Primary antibodies
Short Description	Rabbit polyclonal antibody anti-Muscarinic Acetylcholine Receptor M1 (270-350 Internal) is suitable for use in Western Blot and ELISA research applications.
Applications	WB, ELISA
Host/Source	Rabbit
Reactivity	Human, Mouse, Rat

PRODUCT PROPERTIES

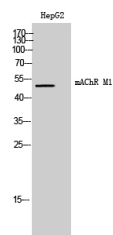
Clonality	Polyclonal
Clone ID	
Concentration	1 mg/mL
Conjugation	Unconjugated
Purification	The antibody was affinity-purified from rabbit anti-serum by affinity-chromatography.
Dilution Range	WB 1:500-1:2000 ELISA 1:5000
Formulation	PBS, 50% Glycerol, 0.5% BSA and 0.02% Sodium Azide.
Isotype	IgG
Storage	Store at -20°C for up to 1 year from the date of receipt, and avoid repeat freeze-thaw cycles.
Instruction	

TARGET INFORMATION

Gene ID	1128
Gene Symbol	CHRM1
Uniprot ID	ACM1_HUMAN
Immunogen	The antiserum was produced against synthesized peptide derived from human CHRM1 at amino acid range 295-344
Immunogen Region	270-350 Internal
Specificity	CHRM1 polyclonal antibody (Muscarinic Acetylcholine Receptor M1) binds to endogenous Muscarinic Acetylcholine Receptor M1 at the amino acid region 270-350 Internal.
Immunogen Sequence	



Western blot analysis of lysates from HepG2 cells, using CHRM1 Antibody. The lane on the right is blocked with the synthesized peptide.



Western blot analysis of HepG2 cells using mACHR M1 Polyclonal Antibody