

## Anti-LYPLA1 antibody (30-110 Internal) (STJ93974)

STJ93974

### GENERAL INFORMATION

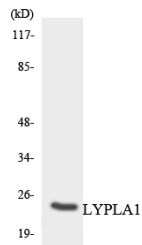
<b>Product Type</b>	Primary antibodies
<b>Short Description</b>	Rabbit polyclonal antibody anti-Acyl-Protein Thioesterase 1 (30-110 Internal) is suitable for use in Western Blot, Immunohistochemistry, Immunofluorescence, Immunocytochemistry and ELISA research applications.
<b>Applications</b>	WB, IHC-P, IF, ICC, ELISA
<b>Host/Source</b>	Rabbit
<b>Reactivity</b>	Human, Mouse, Rat

### PRODUCT PROPERTIES

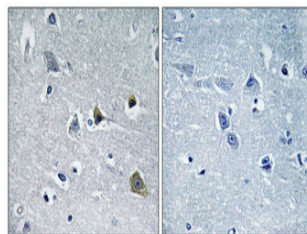
<b>Clonality</b>	Polyclonal
<b>Clone ID</b>	
<b>Concentration</b>	1 mg/mL
<b>Conjugation</b>	Unconjugated
<b>Purification</b>	The antibody was affinity-purified from rabbit anti-serum by affinity-chromatography.
<b>Dilution Range</b>	WB 1:500-1:2000 IHC 1:100-1:300 IF 1:200-1:1000 ELISA 1:40000
<b>Formulation</b>	PBS, 50% Glycerol, 0.5% BSA and 0.02% Sodium Azide.
<b>Isotype</b>	IgG
<b>Storage Instruction</b>	Store at -20°C for up to 1 year from the date of receipt, and avoid repeat freeze-thaw cycles.

### TARGET INFORMATION

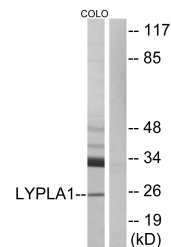
<b>Gene ID</b>	10434
<b>Gene Symbol</b>	LYPLA1
<b>Uniprot ID</b>	LYPA1_HUMAN
<b>Immunogen</b>	The antiserum was produced against synthesized peptide derived from human LYPLA1 at amino acid range 51-100
<b>Immunogen Region</b>	30-110 Internal
<b>Specificity</b>	LYPLA1 polyclonal antibody (Acyl-Protein Thioesterase 1) binds to endogenous Acyl-Protein Thioesterase 1 at the amino acid region 30-110 Internal.
<b>Immunogen Sequence</b>	



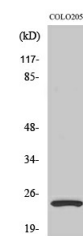
Western blot analysis of the lysates from HeLa cells using LYPLA1 antibody.



Immunohistochemical analysis of paraffin-embedded Human brain. Antibody was diluted at 1:100 (4°C overnight). High-pressure and temperature Tris-EDTA, pH8.0 was used for antigen retrieval. Negative control (right) obtained from antibody was pre-absorbed by immunogen peptide.



Western blot analysis of lysates from COLO cells, using LYPLA1 Antibody. The lane on the right is blocked with the synthesized peptide.



Western blot analysis of various cells using LYPLA1 Polyclonal Antibody diluted at 1: 2000