

Anti-LYL1 antibody (120-200 Internal) (STJ93972)

STJ93972

GENERAL INFORMATION

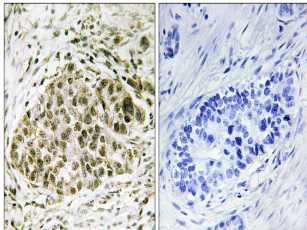
Product Type	Primary antibodies
Short Description	Rabbit polyclonal antibody anti-Protein Lyl-1 (120-200 Internal) is suitable for use in Immunohistochemistry, Immunofluorescence and ELISA research applications.
Applications	IHC-P, IF-P, ELISA
Host/Source	Rabbit
Reactivity	Human, Mouse, Rat

PRODUCT PROPERTIES

Clonality	Polyclonal
Clone ID	
Concentration	1 mg/mL
Conjugation	Unconjugated
Purification	The antibody was affinity-purified from rabbit anti-serum by affinity-chromatography.
Dilution Range	IHC 1:100-1:300 ELISA 1:10000
Formulation	PBS, 50% Glycerol, 0.5% BSA and 0.02% Sodium Azide.
Isotype	IgG
Storage Instruction	Store at -20°C for up to 1 year from the date of receipt, and avoid repeat freeze-thaw cycles.

TARGET INFORMATION

Gene ID	4066
Gene Symbol	LYL1
Uniprot ID	LYL1_HUMAN
Immunogen	The antiserum was produced against synthesized peptide derived from human Lyl-1 at amino acid range 151-200
Immunogen Region	120-200 Internal
Specificity	LYL1 polyclonal antibody (Protein Lyl-1) binds to endogenous Protein Lyl-1 at the amino acid region 120-200 Internal.
Immunogen Sequence	



Immunohistochemistry analysis of paraffin-embedded human lung carcinoma tissue, using Lyl-1 Antibody. The picture on the right is blocked with the synthesized peptide.