

Anti-LFNG antibody (90-170 Internal) (STJ93970)

STJ93970

GENERAL INFORMATION

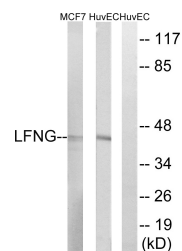
Product Type	Primary antibodies
Short Description	Rabbit polyclonal antibody anti-Beta-1-3-N-Acetylglucosaminyltransferase Lunatic Fringe (90-170 Internal) is suitable for use in Western Blot and ELISA research applications.
Applications	WB, ELISA
Host/Source	Rabbit
Reactivity	Human, Mouse, Rat

PRODUCT PROPERTIES

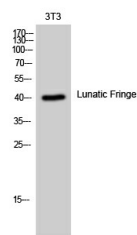
Clonality	Polyclonal
Clone ID	
Concentration	1 mg/mL
Conjugation	Unconjugated
Purification	The antibody was affinity-purified from rabbit anti-serum by affinity-chromatography.
Dilution	WB 1:500-1:2000
Range	ELISA 1:10000
Formulation	PBS, 50% Glycerol, 0.5% BSA and 0.02% Sodium Azide.
Isotype	IgG
Storage	Store at -20°C for up to 1 year from the date of receipt, and avoid repeat freeze-thaw cycles.
Instruction	

TARGET INFORMATION

Gene ID	3955
Gene Symbol	LFNG
Uniprot ID	LFNG_HUMAN
Immunogen	The antiserum was produced against synthesized peptide derived from human LFNG at amino acid range 121-170
Immunogen Region	90-170 Internal
Specificity	LFNG polyclonal antibody (Beta-1-3-N-Acetylglucosaminyltransferase Lunatic Fringe) binds to endogenous Beta-1-3-N-Acetylglucosaminyltransferase Lunatic Fringe at the amino acid region 90-170 Internal.
Immunogen Sequence	



Western blot analysis of lysates from MCF-7 cells, using LFNG Antibody. The lane on the right is blocked with the synthesized peptide.



Western blot analysis of 3T3 cells using Lunatic Fringe Polyclonal Antibody diluted at 1: 1000