

Anti-LTBR antibody (30-110 N-Term) (STJ93967)

STJ93967

GENERAL INFORMATION

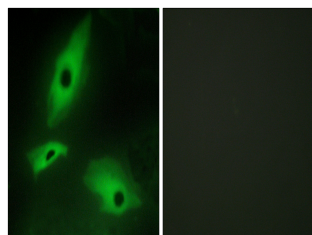
Product Type	Primary antibodies
Short Description	Rabbit polyclonal antibody anti-Tumor Necrosis Factor Receptor Superfamily Member 3 (30-110 N-Term) is suitable for use in Western Blot, Immunofluorescence, Immunocytochemistry and ELISA research applications.
Applications	WB, IF, ICC, ELISA
Host/Source	Rabbit
Reactivity	Human, Mouse

PRODUCT PROPERTIES

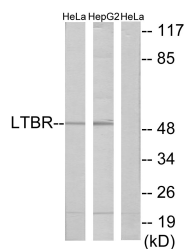
Clonality	Polyclonal
Clone ID	
Concentration	1 mg/mL
Conjugation	Unconjugated
Purification	The antibody was affinity-purified from rabbit anti-serum by affinity-chromatography.
Dilution	WB 1:500-1:2000
Range	IF 1:200-1:1000 ELISA 1:40000
Formulation	PBS, 50% Glycerol, 0.5% BSA and 0.02% Sodium Azide.
Isotype	IgG
Storage	Store at -20°C for up to 1 year from the date of receipt, and avoid repeat freeze-thaw cycles.
Instruction	

TARGET INFORMATION

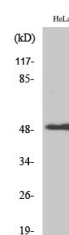
Gene ID	4055
Gene Symbol	LTBR
Uniprot ID	TNR3_HUMAN
Immunogen	The antiserum was produced against synthesized peptide derived from human LTBR at amino acid range 11-60
Immunogen Region	30-110 N-Term
Specificity	LTBR polyclonal antibody (Tumor Necrosis Factor Receptor Superfamily Member 3) binds to endogenous Tumor Necrosis Factor Receptor Superfamily Member 3 at the amino acid region 30-110 N-Term.
Immunogen Sequence	



Immunofluorescence analysis of HeLa cells, using LTBR Antibody. The picture on the right is blocked with the synthesized peptide.



Western blot analysis of lysates from HeLa and HepG2 cells, using LTBR Antibody. The lane on the right is blocked with the synthesized peptide.



Western blot analysis of various cells using LT Beta R Polyclonal Antibody