

Anti-LTB antibody (150-230 C-Term) (STJ93966)

STJ93966

GENERAL INFORMATION

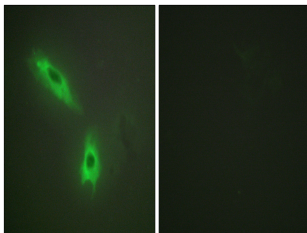
Product Type	Primary antibodies
Short Description	Rabbit polyclonal antibody anti-Lymphotoxin-Beta (150-230 C-Term) is suitable for use in Western Blot, Immunofluorescence, Immunocytochemistry and ELISA research applications.
Applications	WB, IF, ICC, ELISA
Host/Source	Rabbit
Reactivity	Human, Mouse

PRODUCT PROPERTIES

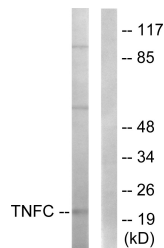
Clonality	Polyclonal
Clone ID	
Concentration	1 mg/mL
Conjugation	Unconjugated
Purification	The antibody was affinity-purified from rabbit anti-serum by affinity-chromatography.
Dilution Range	WB 1:500-1:2000 IF 1:200-1:1000 ELISA 1:10000
Formulation	PBS, 50% Glycerol, 0.5% BSA and 0.02% Sodium Azide.
Isotype	IgG
Storage Instruction	Store at -20°C for up to 1 year from the date of receipt, and avoid repeat freeze-thaw cycles.

TARGET INFORMATION

Gene ID	4050
Gene Symbol	LTB
Uniprot ID	TNFC_HUMAN
Immunogen	The antiserum was produced against synthesized peptide derived from human TNFC at amino acid range 181-230
Immunogen Region	150-230 C-Term
Specificity	LTB polyclonal antibody (Lymphotoxin-Beta) binds to endogenous Lymphotoxin-Beta at the amino acid region 150-230 C-Term.
Immunogen Sequence	



Immunofluorescence analysis of HeLa cells, using TNFC Antibody. The picture on the right is blocked with the synthesized peptide.



Western blot analysis of lysates from HepG2 cells, using TNFC Antibody. The lane on the right is blocked with the synthesized peptide.



Western blot analysis of various cells using LT-Beta Polyclonal Antibody