

Anti-CACNG1 antibody (110-190 Internal) (STJ93964)

STJ93964

GENERAL INFORMATION

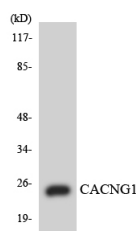
Product Type	Primary antibodies
Short Description	Rabbit polyclonal antibody anti-Voltage-Dependent Calcium Channel Gamma-1 Subunit (110-190 Internal) is suitable for use in Western Blot and ELISA research applications.
Applications	WB, ELISA
Host/Source	Rabbit
Reactivity	Human, Mouse, Rat

PRODUCT PROPERTIES

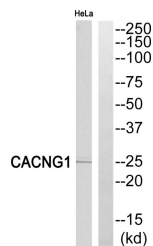
Clonality	Polyclonal
Clone ID	
Concentration	1 mg/mL
Conjugation	Unconjugated
Purification	The antibody was affinity-purified from rabbit anti-serum by affinity-chromatography.
Dilution	WB 1:500-1:2000
Range	ELISA 1:5000
Formulation	PBS, 50% Glycerol, 0.5% BSA and 0.02% Sodium Azide.
Isotype	IgG
Storage	Store at -20°C for up to 1 year from the date of receipt, and avoid repeat freeze-thaw cycles.
Instruction	

TARGET INFORMATION

Gene ID	786
Gene Symbol	CACNG1
Uniprot ID	CCG1_HUMAN
Immunogen	The antiserum was produced against synthesized peptide derived from human CACNG1 at amino acid range 137-186
Immunogen Region	110-190 Internal
Specificity	CACNG1 polyclonal antibody (Voltage-Dependent Calcium Channel Gamma-1 Subunit) binds to endogenous Voltage-Dependent Calcium Channel Gamma-1 Subunit at the amino acid region 110-190 Internal.
Immunogen Sequence	



Western blot analysis of the lysates from COLO205 cells using CACNG1 antibody.



Western blot analysis of CACNG1 Antibody. The lane on the right is blocked with the CACNG1 peptide.

This product is suitable for in-vitro studies under the RESEARCH USE ONLY [RUO] licence. This product must not be used as for diagnostic or other medical purposes.
 St John's Laboratory Ltd, Knowledge Dock Business Centre, University Way, London, E16 2RD | Tel: 0208 223 3081