

Anti-LTK antibody (180-260 Internal) (STJ93963)

STJ93963

GENERAL INFORMATION

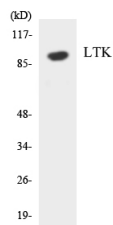
Product Type	Primary antibodies
Short Description	Rabbit polyclonal antibody anti-Leukocyte Tyrosine Kinase Receptor (180-260 Internal) is suitable for use in Western Blot, Immunohistochemistry, Immunofluorescence, Immunocytochemistry and ELISA research applications.
Applications	WB, IHC-P, IF, ICC, ELISA
Host/Source	Rabbit
Reactivity	Human, Mouse

PRODUCT PROPERTIES

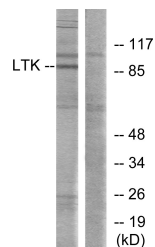
Clonality	Polyclonal
Clone ID	
Concentration	1 mg/mL
Conjugation	Unconjugated
Purification	The antibody was affinity-purified from rabbit anti-serum by affinity-chromatography.
Dilution Range	WB 1:500-1:2000 IHC 1:100-1:300 IF 1:200-1:1000 ELISA 1:5000
Formulation	PBS, 50% Glycerol, 0.5% BSA and 0.02% Sodium Azide.
Isotype	IgG
Storage Instruction	Store at -20°C for up to 1 year from the date of receipt, and avoid repeat freeze-thaw cycles.

TARGET INFORMATION

Gene ID	4058
Gene Symbol	LTK
Uniprot ID	LTK_HUMAN
Immunogen	The antiserum was produced against synthesized peptide derived from human LTK at amino acid range 206-255
Immunogen Region	180-260 Internal
Specificity	LTK polyclonal antibody (Leukocyte Tyrosine Kinase Receptor) binds to endogenous Leukocyte Tyrosine Kinase Receptor at the amino acid region 180-260 Internal.
Immunogen Sequence	



Western blot analysis of the lysates from HeLa cells using LTK antibody.



Western blot analysis of lysates from Jurkat cells, using LTK Antibody. The lane on the right is blocked with the synthesized peptide.

This product is suitable for in-vitro studies under the RESEARCH USE ONLY [RUO] licence. This product must not be used as for diagnostic or other medical purposes.
St John's Laboratory Ltd, Knowledge Dock Business Centre, University Way, London, E16 2RD | Tel: 0208 223 3081