

## Anti-PTGR1 antibody (50-130 Internal) (STJ93962)

STJ93962

### GENERAL INFORMATION

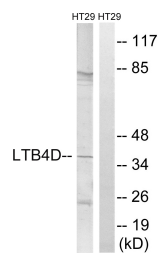
<b>Product Type</b>	Primary antibodies
<b>Short Description</b>	Rabbit polyclonal antibody anti-Prostaglandin Reductase 1 (50-130 Internal) is suitable for use in Western Blot and ELISA research applications.
<b>Applications</b>	WB, ELISA
<b>Host/Source</b>	Rabbit
<b>Reactivity</b>	Human, Rat, Mouse

### PRODUCT PROPERTIES

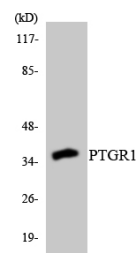
<b>Clonality</b>	Polyclonal
<b>Clone ID</b>	
<b>Concentration</b>	1 mg/mL
<b>Conjugation</b>	Unconjugated
<b>Purification</b>	The antibody was affinity-purified from rabbit anti-serum by affinity-chromatography.
<b>Dilution Range</b>	WB 1:500-1:2000 ELISA 1:5000
<b>Formulation</b>	PBS, 50% Glycerol, 0.5% BSA and 0.02% Sodium Azide.
<b>Isotype</b>	IgG
<b>Storage</b>	Store at -20°C for up to 1 year from the date of receipt, and avoid repeat freeze-thaw cycles.
<b>Instruction</b>	

### TARGET INFORMATION

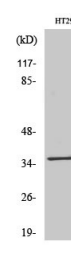
<b>Gene ID</b>	22949
<b>Gene Symbol</b>	PTGR1
<b>Uniprot ID</b>	PTGR1_HUMAN
<b>Immunogen</b>	The antiserum was produced against synthesized peptide derived from human PTGR1 at amino acid range 75-124
<b>Immunogen Region</b>	50-130 Internal
<b>Specificity</b>	PTGR1 polyclonal antibody (Prostaglandin Reductase 1) binds to endogenous Prostaglandin Reductase 1 at the amino acid region 50-130 Internal.
<b>Immunogen Sequence</b>	



Western blot analysis of lysates from HT-29 cells, using PTGR1 Antibody. The lane on the right is blocked with the synthesized peptide.



Western blot analysis of the lysates from 293 cells using PTGR1 antibody.



Western blot analysis of various cells using LTB4DH Polyclonal Antibody

This product is suitable for in-vitro studies under the RESEARCH USE ONLY [RUO] licence. This product must not be used as for diagnostic or other medical purposes.  
St John's Laboratory Ltd, Knowledge Dock Business Centre, University Way, London, E16 2RD | Tel: 0208 223 3081