

Anti-LRRC41 antibody (360-440 Internal) (STJ93958)

STJ93958

GENERAL INFORMATION

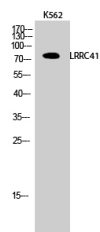
Product Type	Primary antibodies
Short Description	Rabbit polyclonal antibody anti-Leucine-Rich Repeat-Containing Protein 41 (360-440 Internal) is suitable for use in Western Blot, Immunohistochemistry, Immunofluorescence and ELISA research applications.
Applications	WB, IHC-P, IF-P, ELISA
Host/Source	Rabbit
Reactivity	Human, Mouse, Rat

PRODUCT PROPERTIES

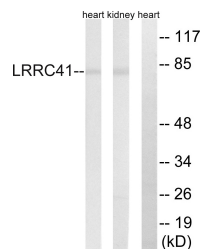
Clonality	Polyclonal
Clone ID	
Concentration	1 mg/mL
Conjugation	Unconjugated
Purification	The antibody was affinity-purified from rabbit anti-serum by affinity-chromatography.
Dilution Range	WB 1:500-1:2000 IHC 1:100-1:300 ELISA 1:5000
Formulation	PBS, 50% Glycerol, 0.5% BSA and 0.02% Sodium Azide.
Isotype	IgG
Storage Instruction	Store at -20°C for up to 1 year from the date of receipt, and avoid repeat freeze-thaw cycles.

TARGET INFORMATION

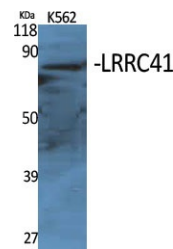
Gene ID	10489
Gene Symbol	LRRC41
Uniprot ID	LRRC41_HUMAN
Immunogen	The antiserum was produced against synthesized peptide derived from human LRRC41 at amino acid range 391-440
Immunogen Region	360-440 Internal
Specificity	LRRC41 polyclonal antibody (Leucine-Rich Repeat-Containing Protein 41) binds to endogenous Leucine-Rich Repeat-Containing Protein 41 at the amino acid region 360-440 Internal.
Immunogen Sequence	



Western blot analysis of K562 cells using LRRC41 Polyclonal Antibody



Western blot analysis of lysates from rat kidney and rat heart cells, using LRRC41 Antibody. The lane on the right is blocked with the synthesized peptide.



Western blot analysis of various cells using LRRC41 Polyclonal Antibody

This product is suitable for in-vitro studies under the RESEARCH USE ONLY [RUO] licence. This product must not be used as for diagnostic or other medical purposes.
St John's Laboratory Ltd, Knowledge Dock Business Centre, University Way, London, E16 2RD | Tel: 0208 223 3081