

Anti-LRP3 antibody (30-110 N-Term) (STJ93957)

STJ93957

GENERAL INFORMATION

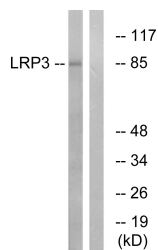
Product Type	Primary antibodies
Short Description	Rabbit polyclonal antibody anti-Low-Density Lipoprotein Receptor-Related Protein 3 (30-110 N-Term) is suitable for use in Western Blot and ELISA research applications.
Applications	WB, ELISA
Host/Source	Rabbit
Reactivity	Human, Mouse, Rat

PRODUCT PROPERTIES

Clonality	Polyclonal
Clone ID	
Concentration	1 mg/mL
Conjugation	Unconjugated
Purification	The antibody was affinity-purified from rabbit anti-serum by affinity-chromatography.
Dilution	WB 1:500-1:2000
Range	ELISA 1:40000
Formulation	PBS, 50% Glycerol, 0.5% BSA and 0.02% Sodium Azide.
Isotype	IgG
Storage	Store at -20°C for up to 1 year from the date of receipt, and avoid repeat freeze-thaw cycles.
Instruction	

TARGET INFORMATION

Gene ID	4037
Gene Symbol	LRP3
Uniprot ID	LRP3_HUMAN
Immunogen	The antiserum was produced against synthesized peptide derived from human LRP3 at amino acid range 17-66
Immunogen Region	30-110 N-Term
Specificity	LRP3 polyclonal antibody (Low-Density Lipoprotein Receptor-Related Protein 3) binds to endogenous Low-Density Lipoprotein Receptor-Related Protein 3 at the amino acid region 30-110 N-Term.
Immunogen Sequence	



Western blot analysis of lysates from RAW264.7 cells, using LRP3 Antibody. The lane on the right is blocked with the synthesized peptide.