

## Anti-LRAT antibody (80-160 Internal) (STJ93952)

STJ93952

### GENERAL INFORMATION

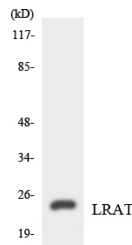
<b>Product Type</b>	Primary antibodies
<b>Short Description</b>	Rabbit polyclonal antibody anti-Lecithin Retinol Acyltransferase (80-160 Internal) is suitable for use in Western Blot, Immunohistochemistry, Immunofluorescence, Immunocytochemistry and ELISA research applications.
<b>Applications</b>	WB, IHC-P, IF, ICC, ELISA
<b>Host/Source</b>	Rabbit
<b>Reactivity</b>	Human, Mouse, Rat

### PRODUCT PROPERTIES

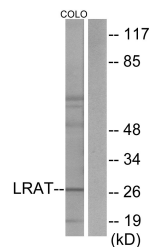
<b>Clonality</b>	Polyclonal
<b>Clone ID</b>	
<b>Concentration</b>	1 mg/mL
<b>Conjugation</b>	Unconjugated
<b>Purification</b>	The antibody was affinity-purified from rabbit anti-serum by affinity-chromatography.
<b>Dilution Range</b>	WB 1:500-1:2000 IHC 1:100-1:300 IF 1:200-1:1000 ELISA 1:10000
<b>Formulation</b>	PBS, 50% Glycerol, 0.5% BSA and 0.02% Sodium Azide.
<b>Isotype</b>	IgG
<b>Storage Instruction</b>	Store at -20°C for up to 1 year from the date of receipt, and avoid repeat freeze-thaw cycles.

### TARGET INFORMATION

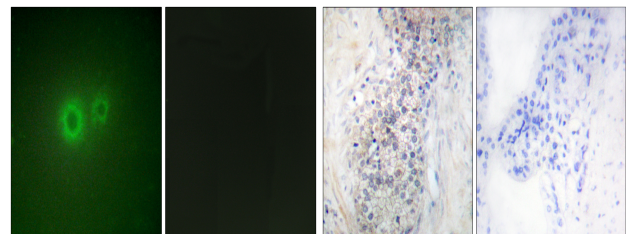
<b>Gene ID</b>	9227
<b>Gene Symbol</b>	LRAT
<b>Uniprot ID</b>	LRAT_HUMAN
<b>Immunogen</b>	The antiserum was produced against synthesized peptide derived from human LRAT at amino acid range 111-160
<b>Immunogen Region</b>	80-160 Internal
<b>Specificity</b>	LRAT polyclonal antibody (Lecithin Retinol Acyltransferase) binds to endogenous Lecithin Retinol Acyltransferase at the amino acid region 80-160 Internal.
<b>Immunogen Sequence</b>	



Western blot analysis of the lysates from COLO205 cells using LRAT antibody.



Western blot analysis of lysates from COLO205 cells, using LRAT Antibody. The lane on the right is blocked with the synthesized peptide.



Immunofluorescence analysis of HUVEC cells, using LRAT Antibody. The picture on the right is blocked with the synthesized peptide.

Immunohistochemistry analysis of paraffin-embedded human prostate carcinoma tissue, using LRAT Antibody. The picture on the right is blocked with the synthesized peptide.

This product is suitable for in-vitro studies under the RESEARCH USE ONLY [RUO] licence. This product must not be used as for diagnostic or other medical purposes.  
St John's Laboratory Ltd, Knowledge Dock Business Centre, University Way, London, E16 2RD | Tel: 0208 223 3081