

Anti-LPCAT2 antibody (290-370 Internal) (STJ93950)

STJ93950

GENERAL INFORMATION

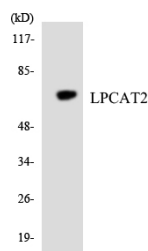
Product Type	Primary antibodies
Short Description	Rabbit polyclonal antibody anti-Lysophosphatidylcholine Acyltransferase 2 (290-370 Internal) is suitable for use in Western Blot and ELISA research applications.
Applications	WB, ELISA
Host/Source	Rabbit
Reactivity	Human, Mouse, Rat

PRODUCT PROPERTIES

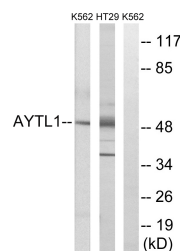
Clonality	Polyclonal
Clone ID	
Concentration	1 mg/mL
Conjugation	Unconjugated
Purification	The antibody was affinity-purified from rabbit anti-serum by affinity-chromatography.
Dilution Range	WB 1:500-1:2000 ELISA 1:40000
Formulation	PBS, 50% Glycerol, 0.5% BSA and 0.02% Sodium Azide.
Isotype	IgG
Storage	Store at -20°C for up to 1 year from the date of receipt, and avoid repeat freeze-thaw cycles.
Instruction	

TARGET INFORMATION

Gene ID	54947
Gene Symbol	LPCAT2
Uniprot ID	PCAT2_HUMAN
Immunogen	The antiserum was produced against synthesized peptide derived from human LPCAT2 at amino acid range 321-370
Immunogen Region	290-370 Internal
Specificity	LPCAT2 polyclonal antibody (Lysophosphatidylcholine Acyltransferase 2) binds to endogenous Lysophosphatidylcholine Acyltransferase 2 at the amino acid region 290-370 Internal.
Immunogen Sequence	



Western blot analysis of the lysates from HT-29 cells using LPCAT2 antibody.



Western blot analysis of lysates from K562 and HT-29 cells, using LPCAT2 Antibody. The lane on the right is blocked with the synthesized peptide.

This product is suitable for in-vitro studies under the RESEARCH USE ONLY [RUO] licence. This product must not be used as for diagnostic or other medical purposes.
St John's Laboratory Ltd, Knowledge Dock Business Centre, University Way, London, E16 2RD | Tel: 0208 223 3081