

## Anti-GPAT3 antibody (350-430 C-Term) (STJ93949)

STJ93949

### GENERAL INFORMATION

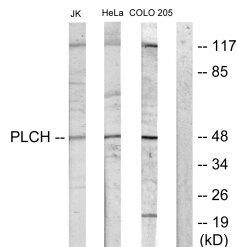
<b>Product Type</b>	Primary antibodies
<b>Short Description</b>	Rabbit polyclonal antibody anti-Glycerol-3-Phosphate Acyltransferase 3 (350-430 C-Term) is suitable for use in Western Blot, Immunohistochemistry, Immunofluorescence, Immunocytochemistry and ELISA research applications.
<b>Applications</b>	WB, IHC-P, IF, ICC, ELISA
<b>Host/Source</b>	Rabbit
<b>Reactivity</b>	Human, Mouse, Rat

### PRODUCT PROPERTIES

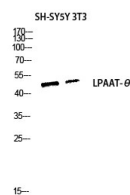
<b>Clonality</b>	Polyclonal
<b>Clone ID</b>	
<b>Concentration</b>	1 mg/mL
<b>Conjugation</b>	Unconjugated
<b>Purification</b>	The antibody was affinity-purified from rabbit anti-serum by affinity-chromatography.
<b>Dilution Range</b>	WB 1:500-1:2000 IHC 1:100-1:300 IF 1:200-1:1000 ELISA 1:10000
<b>Formulation</b>	PBS, 50% Glycerol, 0.5% BSA and 0.02% Sodium Azide.
<b>Isotype</b>	IgG
<b>Storage Instruction</b>	Store at -20°C for up to 1 year from the date of receipt, and avoid repeat freeze-thaw cycles.

### TARGET INFORMATION

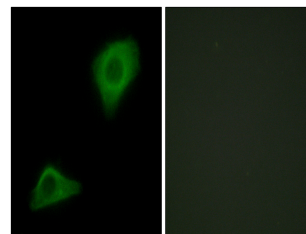
<b>Gene ID</b>	84803
<b>Gene Symbol</b>	GPAT3
<b>Uniprot ID</b>	GPAT3_HUMAN
<b>Immunogen</b>	The antiserum was produced against synthesized peptide derived from human AGPAT9 at amino acid range 381-430
<b>Immunogen Region</b>	350-430 C-Term
<b>Specificity</b>	GPAT3 polyclonal antibody (Glycerol-3-Phosphate Acyltransferase 3) binds to endogenous Glycerol-3-Phosphate Acyltransferase 3 at the amino acid region 350-430 C-Term.
<b>Immunogen Sequence</b>	



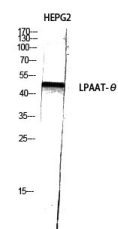
Western blot analysis of lysates from Jurkat cells, COLO205 cells, HeLa cells, and HUVEC cells, using PLCH Antibody. The lane on the right is blocked with the synthesized peptide.



Western blot analysis of SH-SY5Y 3T3 lysis using LPAAT-Theta antibody. Antibody was diluted at 1:1000.



Immunofluorescence analysis of HepG2 cells, using PLCH Antibody. The picture on the right is blocked with the synthesized peptide.



Western blot analysis of HEPG2 using LPAAT-Theta Polyclonal Antibody diluted at 1: 1000.

This product is suitable for in-vitro studies under the RESEARCH USE ONLY [RUO] licence. This product must not be used as for diagnostic or other medical purposes.  
St John's Laboratory Ltd, Knowledge Dock Business Centre, University Way, London, E16 2RD | Tel: 0208 223 3081