

Anti-AGPAT5 antibody (210-290 Internal) (STJ93948)

STJ93948

GENERAL INFORMATION

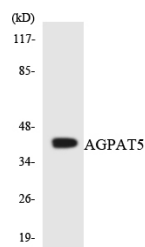
Product Type	Primary antibodies
Short Description	Rabbit polyclonal antibody anti-1-Acyl-Sn-Glycerol-3-Phosphate Acyltransferase Epsilon (210-290 Internal) is suitable for use in Western Blot and ELISA research applications.
Applications	WB, ELISA
Host/Source	Rabbit
Reactivity	Human, Rat, Mouse

PRODUCT PROPERTIES

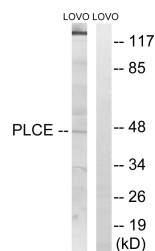
Clonality	Polyclonal
Clone ID	
Concentration	1 mg/mL
Conjugation	Unconjugated
Purification	The antibody was affinity-purified from rabbit anti-serum by affinity-chromatography.
Dilution	WB 1:500-1:2000
Range	ELISA 1:40000
Formulation	PBS, 50% Glycerol, 0.5% BSA and 0.02% Sodium Azide.
Isotype	IgG
Storage	Store at -20°C for up to 1 year from the date of receipt, and avoid repeat freeze-thaw cycles.
Instruction	

TARGET INFORMATION

Gene ID	55326
Gene Symbol	AGPAT5
Uniprot ID	PLCE_HUMAN
Immunogen	The antiserum was produced against synthesized peptide derived from human AGPAT5 at amino acid range 241-290
Immunogen Region	210-290 Internal
Specificity	AGPAT5 polyclonal antibody (1-Acyl-Sn-Glycerol-3-Phosphate Acyltransferase Epsilon) binds to endogenous 1-Acyl-Sn-Glycerol-3-Phosphate Acyltransferase Epsilon at the amino acid region 210-290 Internal.
Immunogen Sequence	



Western blot analysis of the lysates from HeLa cells using AGPAT5 antibody.



Western blot analysis of lysates from LOVO cells, using AGPAT5 Antibody. The lane on the right is blocked with the synthesized peptide.

This product is suitable for in-vitro studies under the RESEARCH USE ONLY [RUO] licence. This product must not be used as for diagnostic or other medical purposes.
 St John's Laboratory Ltd, Knowledge Dock Business Centre, University Way, London, E16 2RD | Tel: 0208 223 3081