

Anti-STK11 antibody (370-450) (STJ93937)

STJ93937

GENERAL INFORMATION

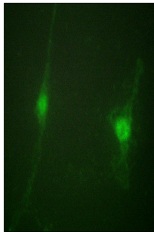
Product Type	Primary antibodies
Short Description	Rabbit polyclonal antibody anti-Serine/Threonine-Protein Kinase Stk11 (370-450) is suitable for use in Western Blot, Immunohistochemistry, Immunofluorescence, Immunocytochemistry and ELISA research applications.
Applications	WB, IHC-P, IF, ICC, ELISA
Host/Source	Rabbit
Reactivity	Human, Mouse

PRODUCT PROPERTIES

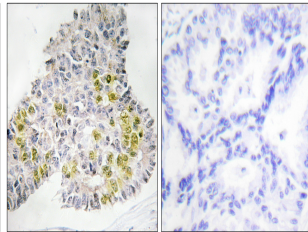
Clonality	Polyclonal
Clone ID	
Concentration	1 mg/mL
Conjugation	Unconjugated
Purification	The antibody was affinity-purified from rabbit anti-serum by affinity-chromatography.
Dilution Range	IHC 1:100-1:300 IF 1:200-1:1000 ELISA 1:20000
Formulation	PBS, 50% Glycerol, 0.5% BSA and 0.02% Sodium Azide.
Isotype	IgG
Storage Instruction	Store at 20°C for up to 1 year from the date of receipt, and avoid repeat freeze-thaw cycles.

TARGET INFORMATION

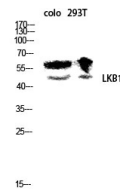
Gene ID	6794
Gene Symbol	STK11
Uniprot ID	STK11_HUMAN
Immunogen Region	The antiserum was produced against synthesized peptide derived from human LKB1 at amino acid range 384-433
Immunogen Sequence	370-450
Specificity	STK11 polyclonal antibody (Serine/Threonine-Protein Kinase Stk11) binds to endogenous Serine/Threonine-Protein Kinase Stk11 at the amino acid region 370-450.



Immunofluorescence analysis of NIH/3T3 cells, using LKB1 Antibody. The picture on the right is blocked with the synthesized peptide.



Immunohistochemistry analysis of paraffin-embedded human lung carcinoma tissue, using LKB1 Antibody. The picture on the right is blocked with the synthesized peptide.



Western blot analysis of colo 293T lysis using LKB1 antibody. Antibody was diluted at 1:500

This product is suitable for in-vitro studies under the RESEARCH USE ONLY [RUO] licence. This product must not be used as for diagnostic or other medical purposes.
St John's Laboratory Ltd, Knowledge Dock Business Centre, University Way, London, E16 2RD | Tel: 0208 223 3081