

Anti-STK11 antibody (130-210) (STJ93936)

STJ93936

GENERAL INFORMATION

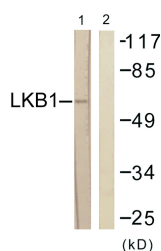
Product Type	Primary antibodies
Short Description	Rabbit polyclonal antibody anti-Serine/Threonine-Protein Kinase Stk11 (130-210) is suitable for use in Western Blot and ELISA research applications.
Applications	WB, ELISA
Host/Source	Rabbit
Reactivity	Human, Mouse

PRODUCT PROPERTIES

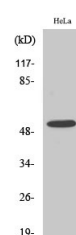
Clonality	Polyclonal
Clone ID	
Concentration	1 mg/mL
Conjugation	Unconjugated
Purification	The antibody was affinity-purified from rabbit anti-serum by affinity-chromatography.
Dilution Range	WB 1:500-1:2000 ELISA 1:5000
Formulation	PBS, 50% Glycerol, 0.5% BSA and 0.02% Sodium Azide.
Isotype	IgG
Storage	Store at -20°C for up to 1 year from the date of receipt, and avoid repeat freeze-thaw cycles.
Instruction	

TARGET INFORMATION

Gene ID	6794
Gene Symbol	STK11
Uniprot ID	STK11_HUMAN
Immunogen	The antiserum was produced against synthesized peptide derived from human LKB1 at amino acid range 155-204
Immunogen Region	130-210
Specificity	STK11 polyclonal antibody (Serine/Threonine-Protein Kinase Stk11) binds to endogenous Serine/Threonine-Protein Kinase Stk11 at the amino acid region 130-210.
Immunogen Sequence	



Western blot analysis of lysates from HeLa cells, treated with Serum 20% 15', using LKB1 Antibody. The lane on the right is blocked with the synthesized peptide.



Western blot analysis of various cells using LKB1 Polyclonal Antibody

This product is suitable for in-vitro studies under the RESEARCH USE ONLY [RUO] licence. This product must not be used as for diagnostic or other medical purposes.
St John's Laboratory Ltd, Knowledge Dock Business Centre, University Way, London, E16 2RD | Tel: 0208 223 3081