

Anti-LIMK2 antibody (220-300) (STJ93931)

STJ93931

GENERAL INFORMATION

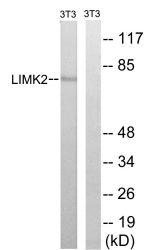
Product Type	Primary antibodies
Short Description	Rabbit polyclonal antibody anti-Lim Domain Kinase 2 (220-300) is suitable for use in Western Blot and ELISA research applications.
Applications	WB, ELISA
Host/Source	Rabbit
Reactivity	Human, Mouse, Rat

PRODUCT PROPERTIES

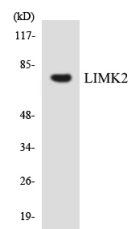
Clonality	Polyclonal
Clone ID	
Concentration	1 mg/mL
Conjugation	Unconjugated
Purification	The antibody was affinity-purified from rabbit anti-serum by affinity-chromatography.
Dilution Range	WB 1:500-1:2000 ELISA 1:5000
Formulation	PBS, 50% Glycerol, 0.5% BSA and 0.02% Sodium Azide.
Isotype	IgG
Storage Instruction	Store at -20°C for up to 1 year from the date of receipt, and avoid repeat freeze-thaw cycles.

TARGET INFORMATION

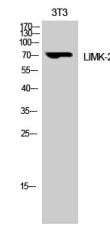
Gene ID	3985
Gene Symbol	LIMK2
Uniprot ID	LIMK2_HUMAN
Immunogen	The antiserum was produced against synthesized peptide derived from human LIMK2 at amino acid range 249-298
Immunogen Region	220-300
Specificity	LIMK2 polyclonal antibody (Lim Domain Kinase 2) binds to endogenous Lim Domain Kinase 2 at the amino acid region 220-300.
Immunogen Sequence	



Western blot analysis of lysates from NIH/3T3 cells, treated with PMA 125ng/ml 30', using LIMK2 Antibody. The lane on the right is blocked with the synthesized peptide.



Western blot analysis of the lysates from RAW264.7 cells using LIMK2 antibody.



Western blot analysis of 3T3 cells using LIMK-2 Polyclonal Antibody

This product is suitable for in-vitro studies under the RESEARCH USE ONLY [RUO] licence. This product must not be used as for diagnostic or other medical purposes.
St John's Laboratory Ltd, Knowledge Dock Business Centre, University Way, London, E16 2RD | Tel: 0208 223 3081