

Anti-LHCGR antibody (590-670 C-Term) (STJ93923)

STJ93923

GENERAL INFORMATION

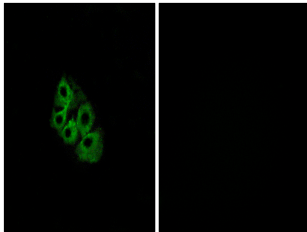
Product Type	Primary antibodies
Short Description	Rabbit polyclonal antibody anti-Lutropin-Choriogonadotropic Hormone Receptor (590-670 C-Term) is suitable for use in Western Blot, Immunofluorescence, Immunocytochemistry and ELISA research applications.
Applications	WB, IF, ICC, ELISA
Host/Source	Rabbit
Reactivity	Human, Mouse, Rat

PRODUCT PROPERTIES

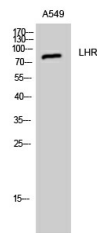
Clonality	Polyclonal
Clone ID	
Concentration	1 mg/mL
Conjugation	Unconjugated
Purification	The antibody was affinity-purified from rabbit anti-serum by affinity-chromatography.
Dilution Range	WB 1:500-1:2000 IF 1:200-1:1000 ELISA 1:10000
Formulation	PBS, 50% Glycerol, 0.5% BSA and 0.02% Sodium Azide.
Isotype	IgG
Storage Instruction	Store at -20°C for up to 1 year from the date of receipt, and avoid repeat freeze-thaw cycles.

TARGET INFORMATION

Gene ID	3973
Gene Symbol	LHCGR
Uniprot ID	LSHR_HUMAN
Immunogen	The antiserum was produced against synthesized peptide derived from human LSHR at amino acid range 621-670
Immunogen Region	590-670 C-Term
Specificity	LHCGR polyclonal antibody (Lutropin-Choriogonadotropic Hormone Receptor) binds to endogenous Lutropin-Choriogonadotropic Hormone Receptor at the amino acid region 590-670 C-Term.
Immunogen Sequence	



Immunofluorescence analysis of A549 cells, using LSHR Antibody. The picture on the right is blocked with the synthesized peptide.



Western blot analysis of A549 cells using LHR Polyclonal Antibody