

Anti-ARHGEF2 antibody (360-440 Internal) (STJ93920)

STJ93920

GENERAL INFORMATION

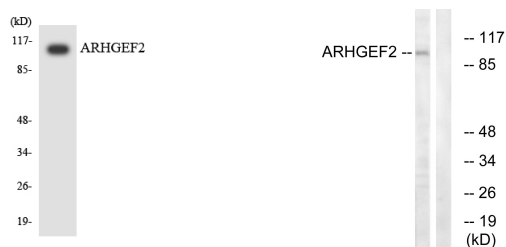
Product Type	Primary antibodies
Short Description	Rabbit polyclonal antibody anti-Rho Guanine Nucleotide Exchange Factor 2 (360-440 Internal) is suitable for use in Western Blot, Immunohistochemistry, Immunofluorescence and ELISA research applications.
Applications	WB, IHC-P, IF-P, ELISA
Host/Source	Rabbit
Reactivity	Human, Rat, Mouse

PRODUCT PROPERTIES

Clonality	Polyclonal
Clone ID	
Concentration	1 mg/mL
Conjugation	Unconjugated
Purification	The antibody was affinity-purified from rabbit anti-serum by affinity-chromatography.
Dilution Range	WB 1:500-1:2000 IHC 1:100-1:300 ELISA 1:20000
Formulation	PBS, 50% Glycerol, 0.5% BSA and 0.02% Sodium Azide.
Isotype	IgG
Storage Instruction	Store at -20°C for up to 1 year from the date of receipt, and avoid repeat freeze-thaw cycles.

TARGET INFORMATION

Gene ID	9181
Gene Symbol	ARHGEF2
Uniprot ID	ARHG2_HUMAN
Immunogen	The antiserum was produced against synthesized peptide derived from human ARHGEF2 at amino acid range 383-432
Immunogen Region	360-440 Internal
Specificity	ARHGEF2 polyclonal antibody (Rho Guanine Nucleotide Exchange Factor 2) binds to endogenous Rho Guanine Nucleotide Exchange Factor 2 at the amino acid region 360-440 Internal.
Immunogen Sequence	



Western blot analysis of the lysates from COLO205 cells using ARHGEF2 antibody.

Western blot analysis of lysates from RAW264.7 cells, using ARHGEF2 Antibody. The lane on the right is blocked with the synthesized peptide.

This product is suitable for in-vitro studies under the RESEARCH USE ONLY [RUO] licence. This product must not be used as for diagnostic or other medical purposes.
St John's Laboratory Ltd, Knowledge Dock Business Centre, University Way, London, E16 2RD | Tel: 0208 223 3081