

Anti-LDLRAD3 antibody (10-90 Internal) (STJ93916)

STJ93916

GENERAL INFORMATION

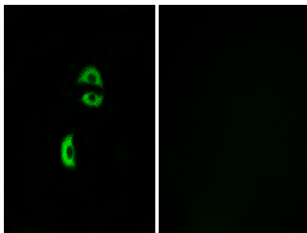
Product Type	Primary antibodies
Short Description	Rabbit polyclonal antibody anti-Low-Density Lipoprotein Receptor Class A Domain-Containing Protein 3 (10-90 Internal) is suitable for use in Immunofluorescence, Immunocytochemistry and ELISA research applications.
Applications	IF, ICC, ELISA
Host/Source	Rabbit
Reactivity	Human, Mouse

PRODUCT PROPERTIES

Clonality	Polyclonal
Clone ID	
Concentration	1 mg/mL
Conjugation	Unconjugated
Purification	The antibody was affinity-purified from rabbit anti-serum by affinity-chromatography.
Dilution	IF 1:200-1:1000
Range	ELISA 1:40000
Formulation	PBS, 50% Glycerol, 0.5% BSA and 0.02% Sodium Azide.
Isotype	IgG
Storage	Store at -20°C for up to 1 year from the date of receipt, and avoid repeat freeze-thaw cycles.
Instruction	

TARGET INFORMATION

Gene ID	143458
Gene Symbol	LDLRAD3
Uniprot ID	LRAD3_HUMAN
Immunogen	The antiserum was produced against synthesized peptide derived from human LDLRAD3 at amino acid range 37-86
Immunogen Region	10-90 Internal
Specificity	LDLRAD3 polyclonal antibody (Low-Density Lipoprotein Receptor Class A Domain-Containing Protein 3) binds to endogenous Low-Density Lipoprotein Receptor Class A Domain-Containing Protein 3 at the amino acid region 10-90 Internal.
Immunogen Sequence	



Immunofluorescence analysis of A549 cells, using LDLRAD3 Antibody. The picture on the right is blocked with the synthesized peptide.