

Anti-LDLRAD1 antibody (60-140 Internal) (STJ93914)

STJ93914

GENERAL INFORMATION

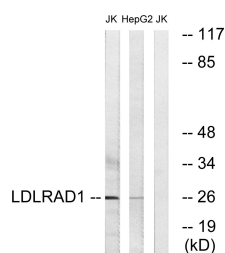
Product Type	Primary antibodies
Short Description	Rabbit polyclonal antibody anti-Low-Density Lipoprotein Receptor Class A Domain-Containing Protein 1 (60-140 Internal) is suitable for use in Western Blot and ELISA research applications.
Applications	WB, ELISA
Host/Source	Rabbit
Reactivity	Human, Rat, Mouse

PRODUCT PROPERTIES

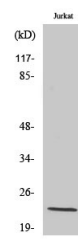
Clonality	Polyclonal
Clone ID	
Concentration	1 mg/mL
Conjugation	Unconjugated
Purification	The antibody was affinity-purified from rabbit anti-serum by affinity-chromatography.
Dilution	WB 1:500-1:2000
Range	ELISA 1:10000
Formulation	PBS, 50% Glycerol, 0.5% BSA and 0.02% Sodium Azide.
Isotype	IgG
Storage	Store at -20°C for up to 1 year from the date of receipt, and avoid repeat freeze-thaw cycles.
Instruction	

TARGET INFORMATION

Gene ID	388633
Gene Symbol	LDLRAD1
Uniprot ID	LRAD1_HUMAN
Immunogen	The antiserum was produced against synthesized peptide derived from human LDLRAD1 at amino acid range 84-133
Immunogen Region	60-140 Internal
Specificity	LDLRAD1 polyclonal antibody (Low-Density Lipoprotein Receptor Class A Domain-Containing Protein 1) binds to endogenous Low-Density Lipoprotein Receptor Class A Domain-Containing Protein 1 at the amino acid region 60-140 Internal.
Immunogen Sequence	



Western blot analysis of lysates from Jurkat and HepG2 cells, using LDLRAD1 Antibody. The lane on the right is blocked with the synthesized peptide.



Western blot analysis of various cells using LDLRAD1 Polyclonal Antibody