

## Anti-LBP antibody (190-270 Internal) (STJ93909)

STJ93909

### GENERAL INFORMATION

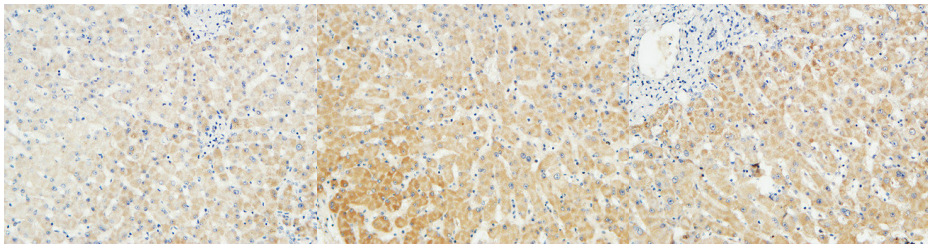
<b>Product Type</b>	Primary antibodies
<b>Short Description</b>	Rabbit polyclonal antibody anti-Lipopolysaccharide-Binding Protein (190-270 Internal) is suitable for use in Western Blot and ELISA research applications.
<b>Applications</b>	WB, ELISA
<b>Host/Source</b>	Rabbit
<b>Reactivity</b>	Human, Mouse, Rat

### PRODUCT PROPERTIES

<b>Clonality</b>	Polyclonal
<b>Clone ID</b>	
<b>Concentration</b>	1 mg/mL
<b>Conjugation</b>	Unconjugated
<b>Purification</b>	The antibody was affinity-purified from rabbit anti-serum by affinity-chromatography.
<b>Dilution Range</b>	WB 1:500-1:2000 ELISA 1:40000
<b>Formulation</b>	PBS, 50% Glycerol, 0.5% BSA and 0.02% Sodium Azide.
<b>Isotype</b>	IgG
<b>Storage</b>	Store at -20°C for up to 1 year from the date of receipt, and avoid repeat freeze-thaw cycles.
<b>Instruction</b>	

### TARGET INFORMATION

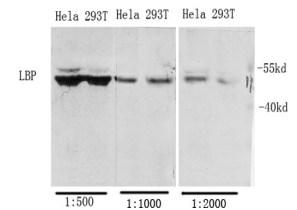
<b>Gene ID</b>	3929
<b>Gene Symbol</b>	LBP
<b>Uniprot ID</b>	LBP_HUMAN
<b>Immunogen</b>	The antiserum was produced against synthesized peptide derived from human LBP at amino acid range 221-270
<b>Immunogen Region</b>	190-270 Internal
<b>Specificity</b>	LBP polyclonal antibody (Lipopolysaccharide-Binding Protein) binds to endogenous Lipopolysaccharide-Binding Protein at the amino acid region 190-270 Internal.
<b>Immunogen Sequence</b>	



Immunohistochemical analysis of paraffin-embedded Human liver. 1. Antibody was diluted at 1:100 (4°C overnight). 2. High-pressure and temperature EDTA, pH8.0 was used for antigen retrieval. 3. Secondary antibody was diluted at 1:200 (room temperature, 30min).

Immunohistochemical analysis of paraffin-embedded Human liver. 1. Antibody was diluted at 1:100 (4°C overnight). 2. High-pressure and temperature EDTA, pH8.0 was used for antigen retrieval. 3. Secondary antibody was diluted at 1:200 (room temperature, 30min).

Immunohistochemical analysis of paraffin-embedded Human liver. 1. Antibody was diluted at 1:100 (4°C overnight). 2. High-pressure and temperature EDTA, pH8.0 was used for antigen retrieval. 3. Secondary antibody was diluted at 1:200 (room temperature, 30min).



Western blot analysis of various cells using Antibody diluted at 1:1000. Secondary antibody was diluted at 1:20000 cells nucleus extracted by Minute™ Cyttoplasmic and Nuclear Fractionation kit (SC-003, Inventiotech, MN, USA).

This product is suitable for in-vitro studies under the RESEARCH USE ONLY [RUO] licence. This product must not be used as for diagnostic or other medical purposes.  
St John's Laboratory Ltd, Knowledge Dock Business Centre, University Way, London, E16 2RD | Tel: 0208 223 3081