

Anti-ADGRL2 antibody (520-600 Internal) (STJ93907)

STJ93907

GENERAL INFORMATION

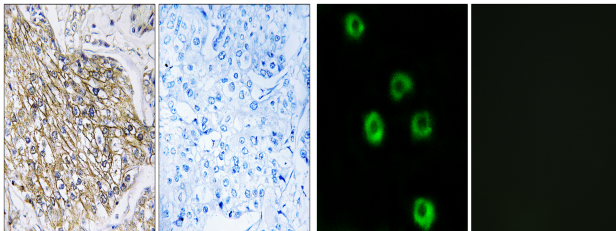
Product Type	Primary antibodies
Short Description	Rabbit polyclonal antibody anti-Adhesion G Protein-Coupled Receptor L2 (520-600 Internal) is suitable for use in Immunohistochemistry, Immunofluorescence, Immunocytochemistry and ELISA research applications.
Applications	IHC-P, IF, ICC, ELISA
Host/Source	Rabbit
Reactivity	Human, Mouse, Rat

PRODUCT PROPERTIES

Clonality	Polyclonal
Clone ID	
Concentration	1 mg/mL
Conjugation	Unconjugated
Purification	The antibody was affinity-purified from rabbit anti-serum by affinity-chromatography.
Dilution Range	WB 1:500-2000 IHC 1:100-1:300 IF 1:200-1:1000 ELISA 1:5000
Formulation	PBS, 50% Glycerol, 0.5% BSA and 0.02% Sodium Azide.
Isotype	IgG
Storage Instruction	Store at -20°C for up to 1 year from the date of receipt, and avoid repeat freeze-thaw cycles.

TARGET INFORMATION

Gene ID	23266
Gene Symbol	ADGRL2
Uniprot ID	AGRL2_HUMAN
Immunogen	The antiserum was produced against synthesized peptide derived from human LPHN2 at amino acid range 551-600
Immunogen Region	520-600 Internal
Specificity	ADGRL2 polyclonal antibody (Adhesion G Protein-Coupled Receptor L2) binds to endogenous Adhesion G Protein-Coupled Receptor L2 at the amino acid region 520-600 Internal.
Immunogen Sequence	



Immunohistochemistry analysis of paraffin-embedded human breast carcinoma tissue, using LPHN2 Antibody. The picture on the right is blocked with the synthesized peptide.

Immunofluorescence analysis of COS7 cells, using LPHN2 Antibody. The picture on the right is blocked with the synthesized peptide.

This product is suitable for in-vitro studies under the RESEARCH USE ONLY [RUO] licence. This product must not be used as for diagnostic or other medical purposes.
St John's Laboratory Ltd, Knowledge Dock Business Centre, University Way, London, E16 2RD | Tel: 0208 223 3081