

Anti-LAT antibody (160-240) (STJ93904)

STJ93904

GENERAL INFORMATION

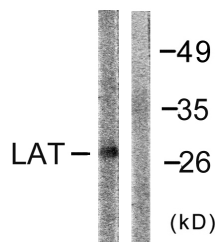
| | |
|--------------------------|---|
| Product Type | Primary antibodies |
| Short Description | Rabbit polyclonal antibody anti-Linker For Activation Of T-Cells Family Member 1 (160-240) is suitable for use in Western Blot and ELISA research applications. |
| Applications | WB, ELISA |
| Host/Source | Rabbit |
| Reactivity | Human, Mouse, Rat |

PRODUCT PROPERTIES

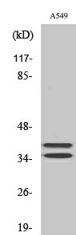
| | |
|-----------------------|--|
| Clonality | Polyclonal |
| Clone ID | |
| Concentration | 1 mg/mL |
| Conjugation | Unconjugated |
| Purification | The antibody was affinity-purified from rabbit anti-serum by affinity-chromatography. |
| Dilution Range | WB 1:500-1:2000 ELISA 1:5000 |
| Formulation | PBS, 50% Glycerol, 0.5% BSA and 0.02% Sodium Azide. |
| Isotype | IgG |
| Storage | Store at -20°C for up to 1 year from the date of receipt, and avoid repeat freeze-thaw cycles. |
| Instruction | |

TARGET INFORMATION

| | |
|---------------------------|---|
| Gene ID | 27040 |
| Gene Symbol | LAT |
| Uniprot ID | LAT_HUMAN |
| Immunogen | The antiserum was produced against synthesized peptide derived from human LAT at amino acid range 191-240. |
| Immunogen Region | 160-240 |
| Specificity | LAT polyclonal antibody (Linker For Activation Of T-Cells Family Member 1) binds to endogenous Linker For Activation Of T-Cells Family Member 1 at the amino acid region 160-240. |
| Immunogen Sequence | |



Western blot analysis of lysates from NIH/3T3 cells, using LAT Antibody. The lane on the right is blocked with the synthesized peptide.



Western blot analysis of various cells using LAT Polyclonal Antibody diluted at 1: 500