

## Anti-LAT antibody (140-220) (STJ93903)

STJ93903

### GENERAL INFORMATION

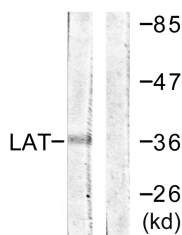
<b>Product Type</b>	Primary antibodies
<b>Short Description</b>	Rabbit polyclonal antibody anti-Linker For Activation Of T-Cells Family Member 1 (140-220) is suitable for use in Western Blot and ELISA research applications.
<b>Applications</b>	WB, ELISA
<b>Host/Source</b>	Rabbit
<b>Reactivity</b>	Human, Mouse, Rat

### PRODUCT PROPERTIES

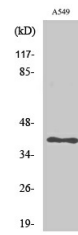
<b>Clonality</b>	Polyclonal
<b>Clone ID</b>	
<b>Concentration</b>	1 mg/mL
<b>Conjugation</b>	Unconjugated
<b>Purification</b>	The antibody was affinity-purified from rabbit anti-serum by affinity-chromatography.
<b>Dilution Range</b>	WB 1:500-1:2000 ELISA 1:20000
<b>Formulation</b>	PBS, 50% Glycerol, 0.5% BSA and 0.02% Sodium Azide.
<b>Isotype</b>	IgG
<b>Storage</b>	Store at -20°C for up to 1 year from the date of receipt, and avoid repeat freeze-thaw cycles.
<b>Instruction</b>	

### TARGET INFORMATION

<b>Gene ID</b>	27040
<b>Gene Symbol</b>	LAT
<b>Uniprot ID</b>	LAT_HUMAN
<b>Immunogen</b>	The antiserum was produced against synthesized peptide derived from human LAT at amino acid range 171-220
<b>Immunogen Region</b>	140-220
<b>Specificity</b>	LAT polyclonal antibody (Linker For Activation Of T-Cells Family Member 1) binds to endogenous Linker For Activation Of T-Cells Family Member 1 at the amino acid region 140-220.
<b>Immunogen Sequence</b>	



Western blot analysis of lysates from A549 cells, using LAT Antibody. The lane on the right is blocked with the synthesized peptide.



Western blot analysis of various cells using LAT Polyclonal Antibody