

Anti-LAT antibody (60-140) (STJ93902)

STJ93902

GENERAL INFORMATION

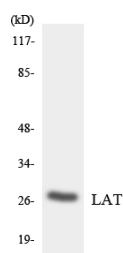
Product Type	Primary antibodies
Short Description	Rabbit polyclonal antibody anti-Linker For Activation Of T-Cells Family Member 1 (60-140) is suitable for use in Western Blot and ELISA research applications.
Applications	WB, ELISA
Host/Source	Rabbit
Reactivity	Human, Rat, Mouse

PRODUCT PROPERTIES

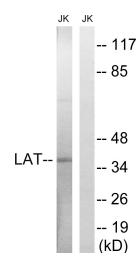
Clonality	Polyclonal
Clone ID	
Concentration	1 mg/mL
Conjugation	Unconjugated
Purification	The antibody was affinity-purified from rabbit anti-serum by affinity-chromatography.
Dilution Range	WB 1:500-1:2000 ELISA 1:10000
Formulation	PBS, 50% Glycerol, 0.5% BSA and 0.02% Sodium Azide.
Isotype	IgG
Storage	Store at -20°C for up to 1 year from the date of receipt, and avoid repeat freeze-thaw cycles.
Instruction	

TARGET INFORMATION

Gene ID	27040
Gene Symbol	LAT
Uniprot ID	LAT_HUMAN
Immunogen	The antiserum was produced against synthesized peptide derived from human LAT at amino acid range 86-135
Immunogen Region	60-140
Specificity	LAT polyclonal antibody (Linker For Activation Of T-Cells Family Member 1) binds to endogenous Linker For Activation Of T-Cells Family Member 1 at the amino acid region 60-140.
Immunogen Sequence	



Western blot analysis of the lysates from HUVEC cells using LAT antibody.



Western blot analysis of lysates from Jurkat cells, using LAT Antibody. The lane on the right is blocked with the synthesized peptide.

This product is suitable for in-vitro studies under the RESEARCH USE ONLY [RUO] licence. This product must not be used as for diagnostic or other medical purposes.
St John's Laboratory Ltd, Knowledge Dock Business Centre, University Way, London, E16 2RD | Tel: 0208 223 3081