

Anti-TOR1AIP1 antibody (400-480 Internal) (STJ93899)

STJ93899

GENERAL INFORMATION

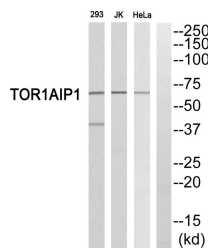
Product Type	Primary antibodies
Short Description	Rabbit polyclonal antibody anti-Torsin-1a-Interacting Protein 1 (400-480 Internal) is suitable for use in Western Blot and ELISA research applications.
Applications	WB, ELISA
Host/Source	Rabbit
Reactivity	Human, Rat, Mouse

PRODUCT PROPERTIES

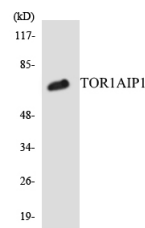
Clonality	Polyclonal
Clone ID	
Concentration	1 mg/mL
Conjugation	Unconjugated
Purification	The antibody was affinity-purified from rabbit anti-serum by affinity-chromatography.
Dilution Range	WB 1:500-1:2000 ELISA 1:10000
Formulation	PBS, 50% Glycerol, 0.5% BSA and 0.02% Sodium Azide.
Isotype	IgG
Storage Instruction	Store at -20°C for up to 1 year from the date of receipt, and avoid repeat freeze-thaw cycles.

TARGET INFORMATION

Gene ID	26092
Gene Symbol	TOR1AIP1
Uniprot ID	TOIP1_HUMAN
Immunogen	The antiserum was produced against synthesized peptide derived from human TOR1AIP1 at amino acid range 431-480
Immunogen Region	400-480 Internal
Specificity	TOR1AIP1 polyclonal antibody (Torsin-1a-Interacting Protein 1) binds to endogenous Torsin-1a-Interacting Protein 1 at the amino acid region 400-480 Internal.
Immunogen Sequence	



Western blot analysis of TOR1AIP1 Antibody. The lane on the right is blocked with the TOR1AIP1 peptide.



Western blot analysis of the lysates from COLO205 cells using TOR1AIP1 antibody.



Western blot analysis of various cells using LAP1B Polyclonal Antibody cells nucleus extracted by Minute™ Cytoplasmic and Nuclear Fractionation kit (SC-003, Inventibiotech, MN, USA).

This product is suitable for in-vitro studies under the RESEARCH USE ONLY [RUO] licence. This product must not be used as for diagnostic or other medical purposes.
St John's Laboratory Ltd, Knowledge Dock Business Centre, University Way, London, E16 2RD | Tel: 0208 223 3081